

BRAYTON

PAUL BRAYTON DESIGNS

BRAYTON
PAUL BRAYTON DESIGNS

WOVEN

Anchor.....	2-3
Cameron & Walden	4-5
Estate Tweed.....	6-7
Fuse.....	8-9
Jilly Twill.....	10-11
Nimbus	12-13
Pebble.....	14-15
Plaid Perfect	16-17
Rhyme	18-19
Tally	20-21
Tulip.....	22-23
Woodland.....	24-25

ALMOST®

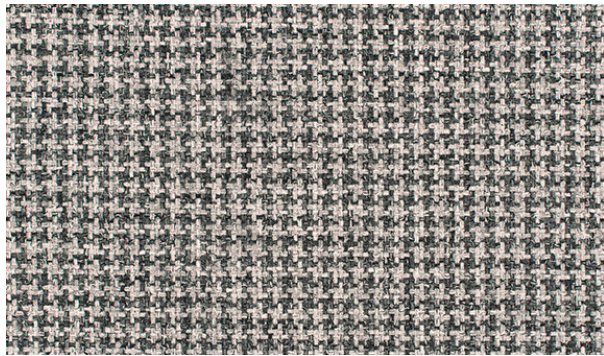
About Almost®.....	26
Custom Color Emboss.....	27
Almost®	28-29
Almost® Asheville.....	30-31
Almost® Avante	32-33
Almost® Barcelona,.....	34-35
Almost® Cambridge, Almost® Icon	
Almost® Buffed,.....	36-37
Almost® Glove, Almost® Natural	

Almost® Calf.....	38-39
Almost® Classic,	40-41
Almost® Matte	
Almost® Nappa.....	42-43
Almost® Pearl,.....	44-45
Almost® Vogue, Almost® Ostrich	
Almost® Suede.....	46-47
Almost® Textura	48-49

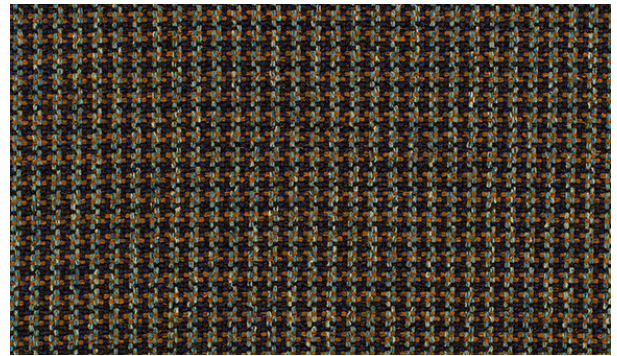
NON-WOVEN

Boho.....	50-51
Ginseng	52-53
Harmony.....	54-55
Salinger	56-57
Tolstoy.....	58-59
Ultrafabrics®.....	60-61
UF Select Harbor, UF Select Bayside	
Ultrafabrics®.....	62-63
Ultraleather Gulf Pro, Ultraleather Pacific Pro	
Viva.....	64-65
Leather	
Copenhagen.....	66-67

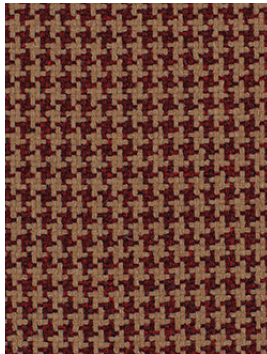
Anchor



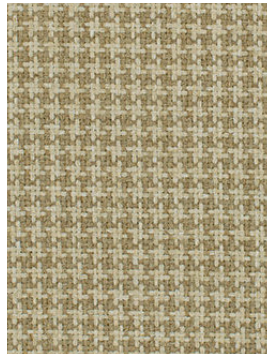
AC01 Puget Sound



AC02 Pike Place



AC03 Golden Garden



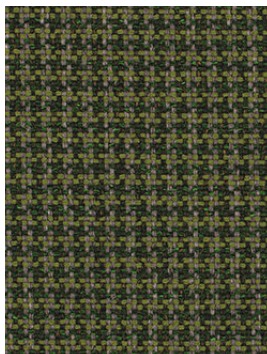
AC04 Cannon Beach



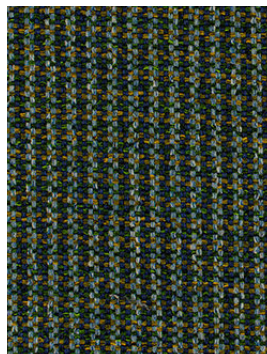
AC05 Trek



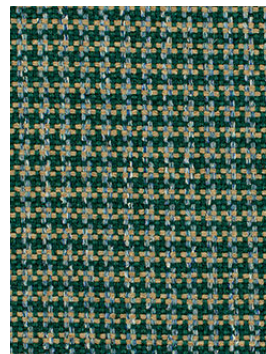
AC06 Coffee Bean



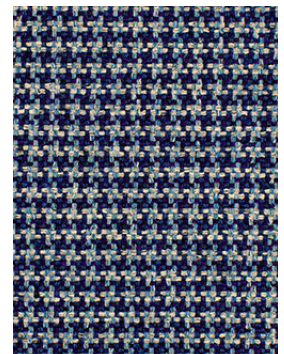
AC07 Green Lake



AC08 Cascades



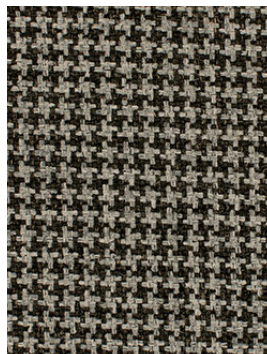
AC09 Olympia



AC10 Seattle



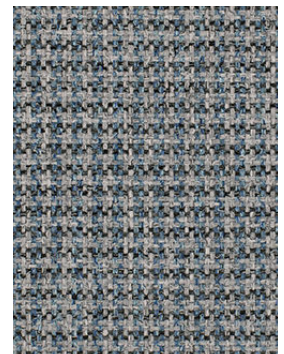
AC11 Carbon River



AC12 Harbor Island



AC13 Silver Lake



AC14 Crystal Falls

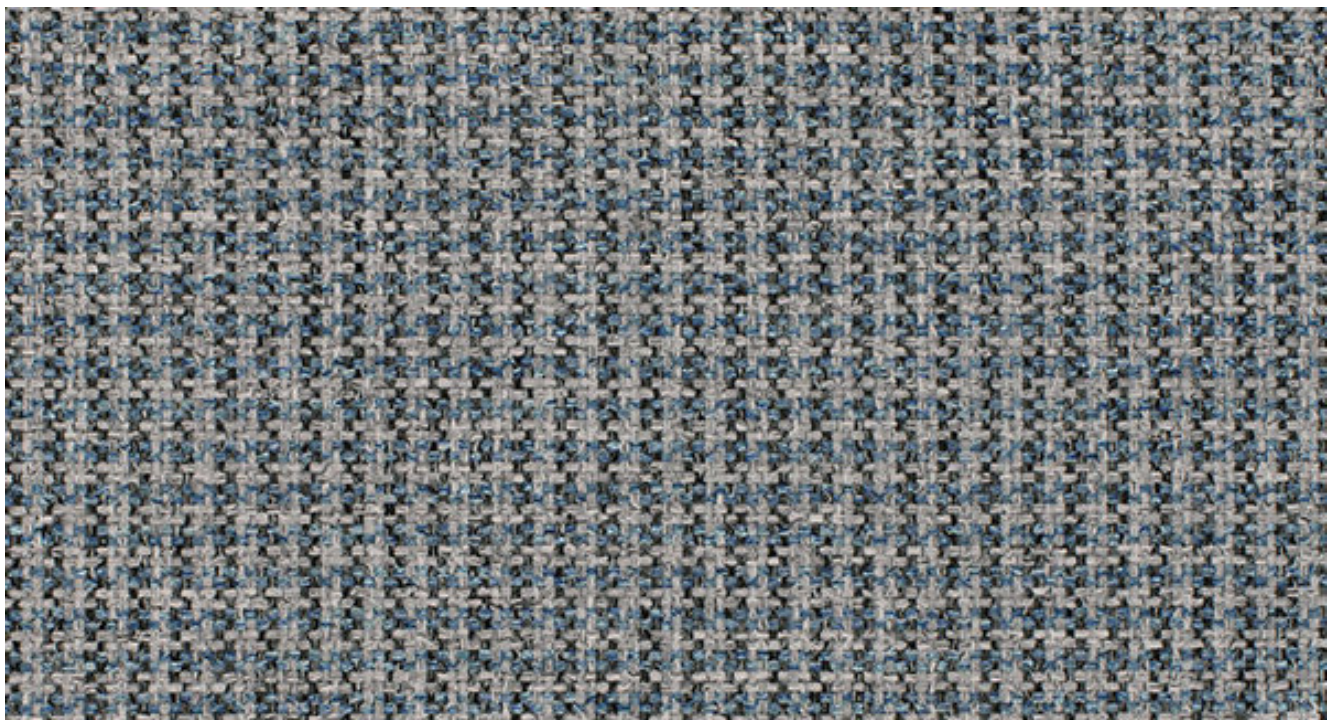
BLEACH CLEANABLE	TOTAL LIQUID BARRIER	ECO-CONCIOUS
------------------	----------------------	--------------

Anchor



CONTENT:	91% Polyester / 7% Polyurethane / 2% Silicone
FINISH:	SUPREEN™ Liquid Barrier
BACKING:	Polyurethane
WIDTH: 54"	REPEAT: None
PATTERN DIRECTION:	Shown up the roll
APPLICATION:	Heavy Duty Upholstery
DURABILITY:	100,000 + Double Rubs ASTM D 4157-13 Wyzenbeek
FLAMMABILITY CLASS:	1. California Technical Bulletin 117 : 2013 2. UFAC Class 1. 3. NFPA 260
CLEANING CODE:	S/W, Spot clean with upholstery shampoo, foam from a mild detergent, or a mild dry cleaning solvent. Do not saturate with liquid. Pile fabrics may require brushing to restore appearance. Cushion covers should not be removed and dry cleaned. Bleach Cleanable: 1:10 bleach to water solution.
ECO-FEATURES:	This product does not pose any exposure risks associated with the chemicals in PROP 65. No added flame-retardant chemicals - AB2998 Compliant. No added Anti-bacterial / Anti-microbial chemicals. Lead / Heavy Metal Free BPA free / TRIS free / Formaldehyde Free Does not contain conflict minerals.

Healthier Hospital Compliant - Disclaimer: This product meets the Healthy Interior goals of the Safer Chemical Challenge according to the manufacturer Practice Greenhelath does not verify this information.



Cameron



Walden



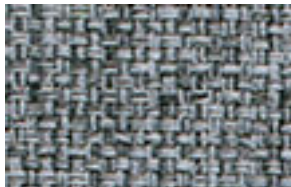
CM01 Harbor



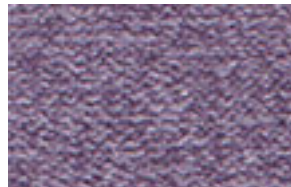
WL01 Beach



CM02 Jetty



CM03 Fog



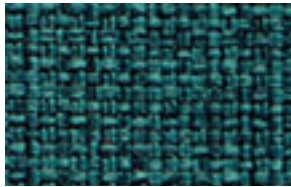
WL02 Dragonfly



WL03 Sandy Swan



CM04 Blue Lake



CM05 Aquatic



WL04 Lily Pad



WL05 Inlet



CM06 Starboard



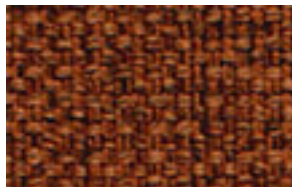
CM07 Marina



WL06 Marsh



WL07 Gravel Path



CM08 Copper Keel



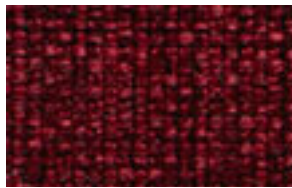
CM09 Wake



WL08 Misty



WL09 Silver Cove



CM10 Port



CM11 Pontoon



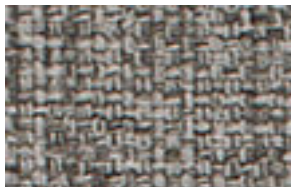
WL10 Drift



WL11 Anchor Slate



CM12 Deck



CM13 Mast



WL12 Breezy



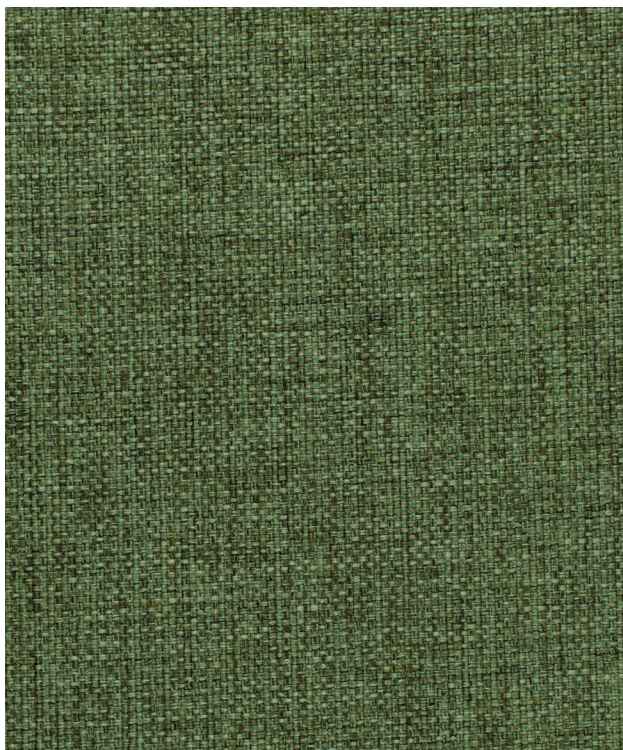
WL13 Coast

Cameron & Walden



CONTENT (CAMERON):	94% Polyester / 4% Polyurethane / 2% Silicone
CONTENT (WALDEN):	89% Polyester / 9% Polyurethane / 2% Silicone
FINISH:	SUPREEN™ Stain Repellent
BACKING:	SUPREEN™ Liquid Barrier
WIDTH: 54"	REPEAT: None
PATTERN DIRECTION:	Shown up the roll
APPLICATION:	Heavy Duty Upholstery
DURABILITY:	100,000 + Double Rubs ASTM D 4157-13 Wyzenbeek
FLAMMABILITY CLASS:	1. California Technical Bulletin 117 : 2013 2. UFAC Class 1 3. NFPA
CLEANING CODE:	S/W, Spot clean with upholstery shampoo, foam from a mild detergent, or a mild dry cleaning solvent. Do not saturate with liquid. Pile fabrics may require brushing to rest should not be removed and dry cleaned. Bleach Cleanable: 1:10 bleach to water solution
ECO-FEATURES:	This product does not pose any exposure risks associated with the chemicals in PROP 65. No added flame-retardant chemicals – AB2998 Compliant. No added Anti-bacterial / Anti-microbial chemicals. Lead / Heavy Metal Free BPA free / TRIS free / Formaldehyde Free Does not contain conflict minerals.

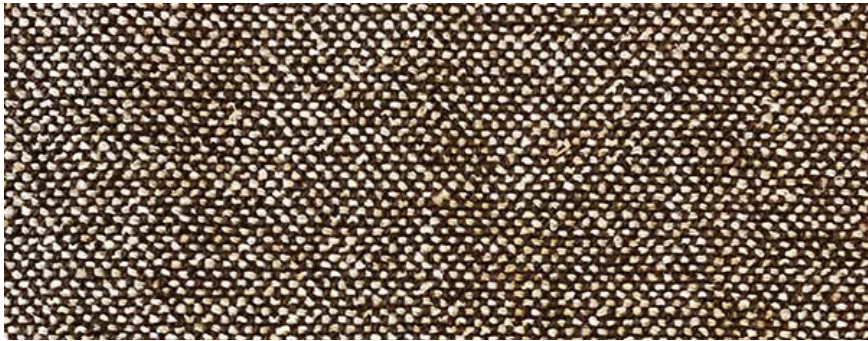
Cameron



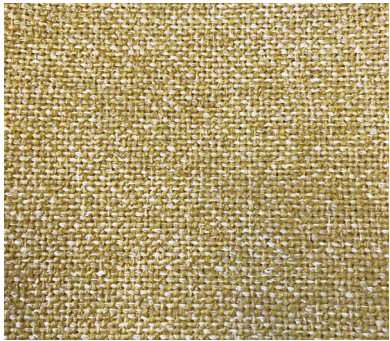
Walden



Estate Tweed



ET-01 Fleming



ET-02 Paterson



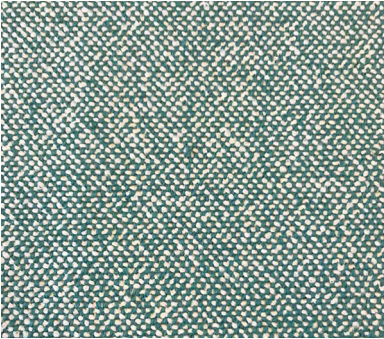
ET-03 Stewart



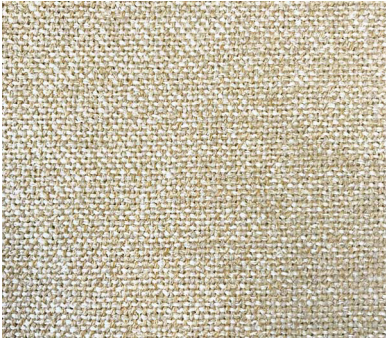
ET-04 Crawford



ET-05 Malcolm



ET-06 Douglas



ET-07 Fletcher



ET-08 Gordon



ET-09 Brodie



ET-10 Mitchell



ET-11 Murray

Estate Tweed

Content:

63% Polyester; 37% Acrylic

Grade: 1

Width:

54"

Weight:

17.60 oz / LY

Country Of Origin:

USA

Standard Backing:

Latex Acrylic

Pattern Direction:

Railroaded

Abrasion:

75,000 double rubs, Wyzenbeek*

Cleaning Code:

WS

AATC-8 / Crocking:

Pass

NFPA 260 (UFAC):

Pass

Cal 117 2013:

Pass

ACT Symbols:

Notes:

Additional backing may be added to meet flame code ASTM E84 for Panel and Wallcoverings applications. Contact Customer Service for pricing.

**Abrasion test results exceeding ACT Performance Guidelines are not an indicator of product lifespan. Multiple factors affect fabric durability and appearance retention.*

***ACT® Registered Certification Marks*



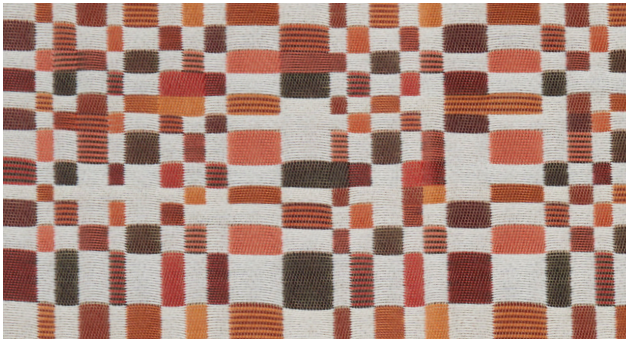
Fuse



FS01 Chicago



FS02 Savanna



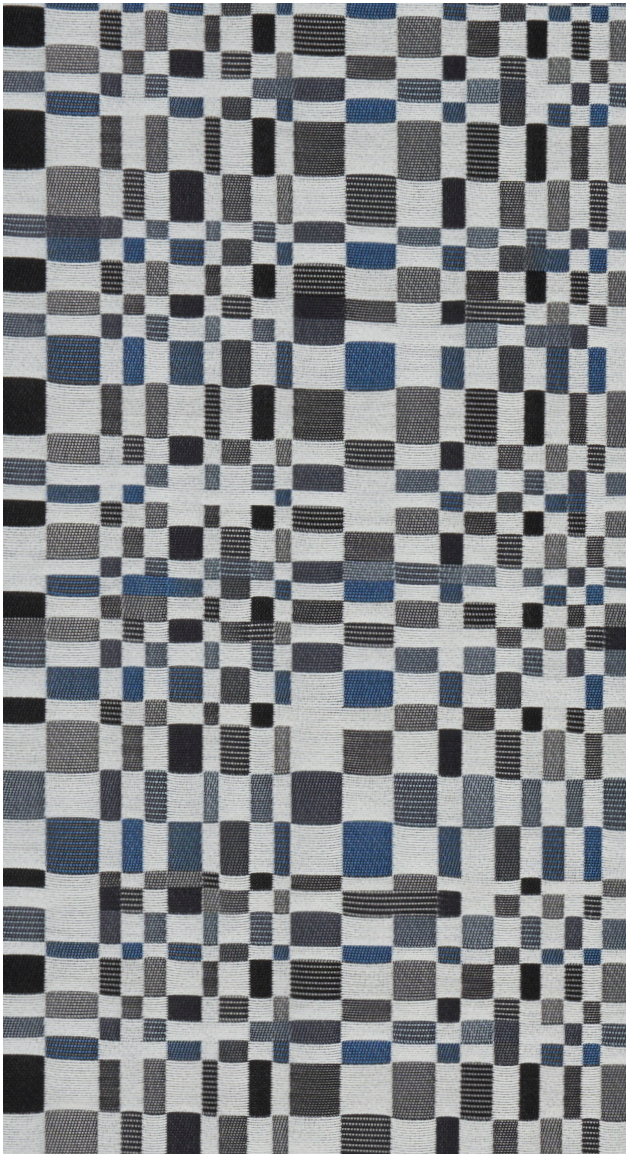
FS03 Phoenix



FS04 Charlotte



FS05 Portland



FS06 Philadelphia

Fuse

Content:

36% Acrylic, 34% Post Consumer Polyester, 30% Nylon

Finish:

Defend Free water repellent

Backing: None

Grade: 4

Width:

54"

Weight:

16.78 oz / LY

Country Of Origin:

USA

Repeat:

9.5" V x 9.625" H

Pattern Direction:

Up the Roll

Abrasion:

100,000 double rubs, Wyzenbeek*

Cleaning Code:

WSB

Bleach Cleanable:

10:1 Water:Bleach

Breaking Strength:

ASTM-D5034-21
Pass

Cal 117 2013:

Pass

Environmental Benefits:

PFAS Free, No added Flame Retardant chemicals, No added anti-bacterial / anti-microbial chemicals, Lead free, Heavy metal free, Formaldehyde free, BPA free

Certificates & Standards:

Healthier Hospitals Compliant

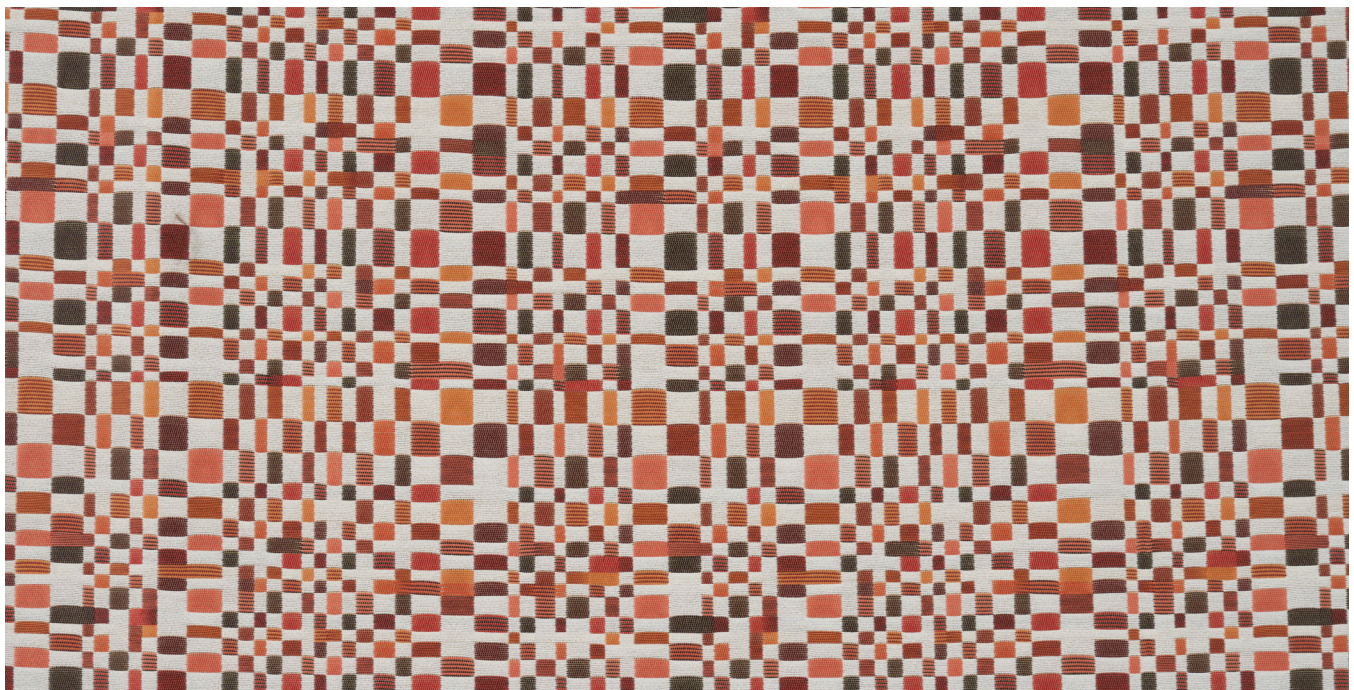
Flammability Notes:

FR Free

ACT Symbols:

**Abrasion test results exceeding ACT Performance Guidelines are not an indicator of product lifespan. Multiple factors affect fabric durability and appearance retention.*

***ACT® Registered Certification Marks*



Jilly Twill



Grape JT01



Pea Pod JT03



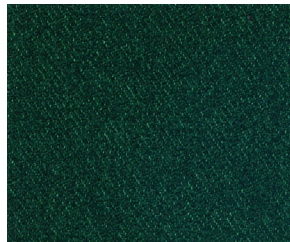
Black JT04



Silver Birch JT05



Bluebird JT06



Alpine JT08



Dill JT10



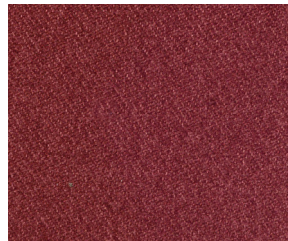
Laguna JT12



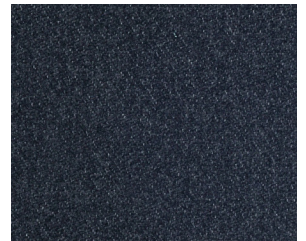
Dark Granite JT15



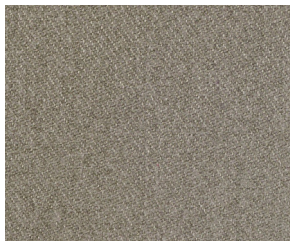
Medium Gray JT17



Ruby Red JT18



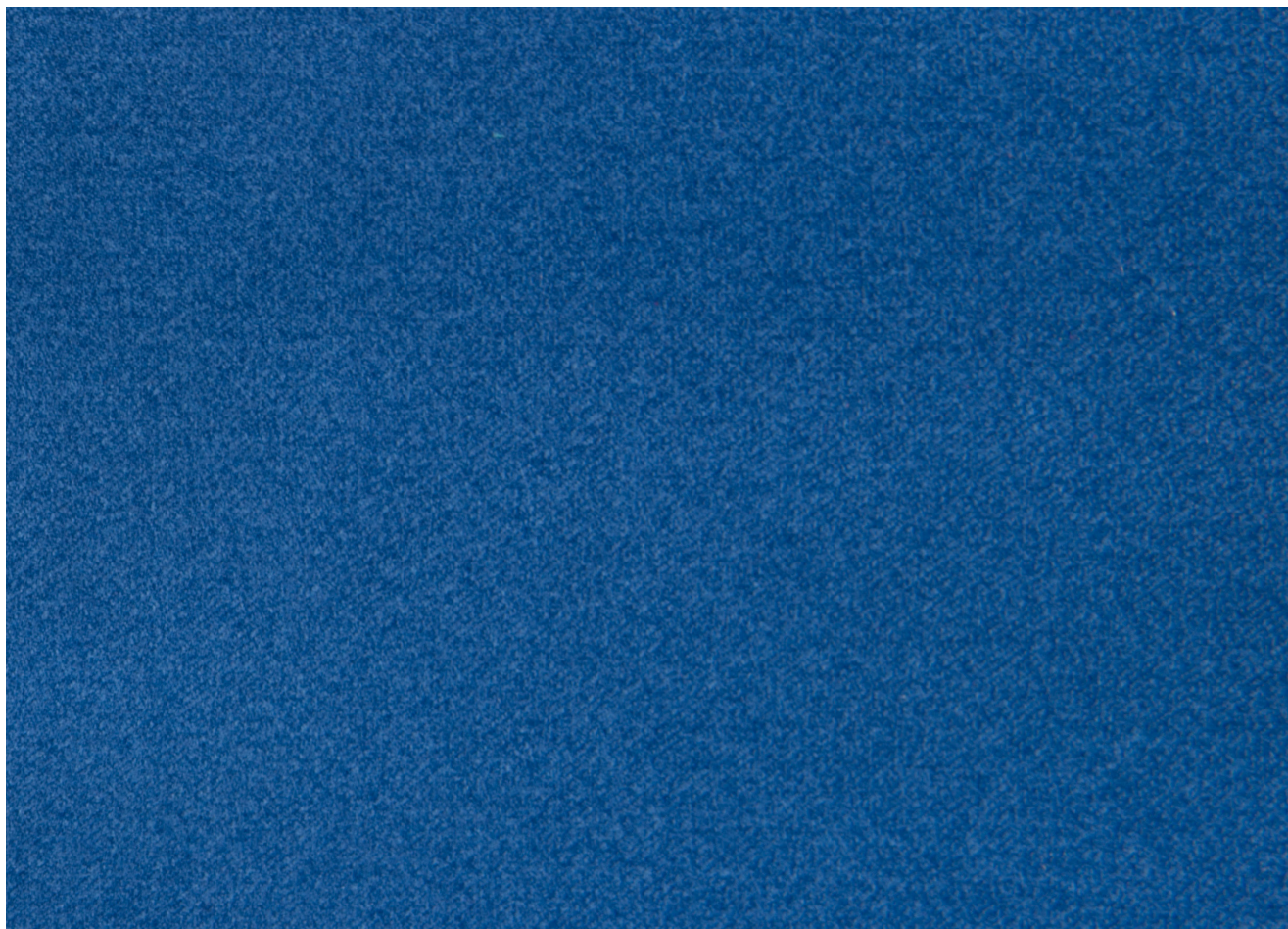
JT20 Bleu



Gray-Taupe JT24

Jilly Twill

DESIGN:	Paul Brayton Designs Exclusive
CONTENT:	100% Polyester
FINISH:	Stain Repellent
BACKING:	Light Acrylic
WIDTH: 54"	REPEAT: None
PATTERN DIRECTION:	Shown up the roll
APPLICATION:	Heavy Duty Upholstery
DURABILITY:	100,000+ Double Rubs – Wyzenbeek / Cotton Duck
FLAMMABILITY CLASS:	1. California Technical Bulletin 117 : 2013
CLEANING CODE:	S – Spot clean using water-free solvent or dry cleaning product. Cleaning by a professional service is recommended.



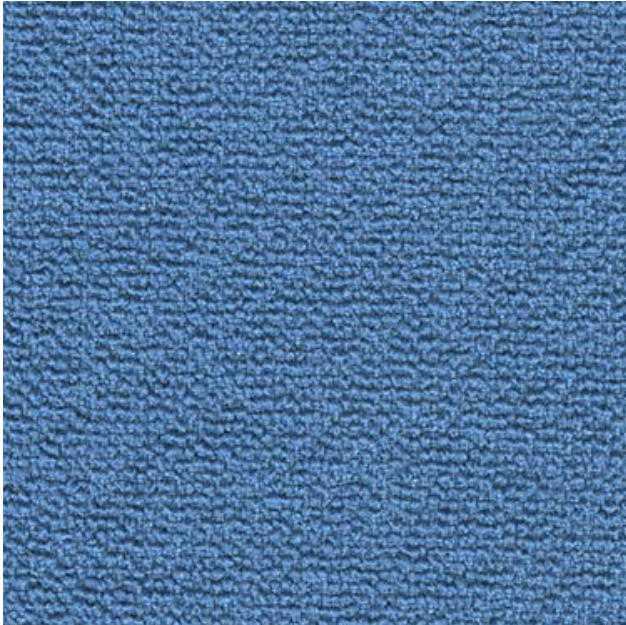
Nimbus



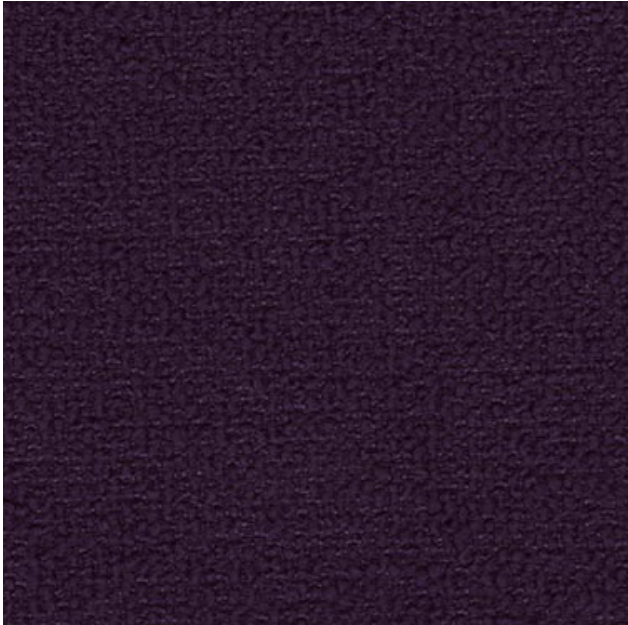
NM-20 Sealskin



NM-21 Lime



NM-40 Cancun



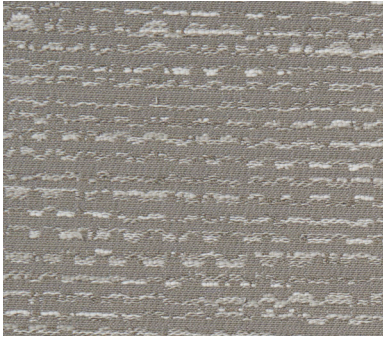
NM-70 Baroness

Nimbus

CONTENT:	100% Post-Consumer Recycled Polyester
FINISH:	GreenShield with light acrylic backing
WIDTH: 54"	REPEAT: None
PATTERN DIRECTION:	Shown up the roll
APPLICATION:	Heavy Duty Upholstery
DURABILITY:	250,000+ double rubs
FLAMMABILITY CLASSIFICATION:	California Technical Bulletin 117 : 2013
CLEANING CODE:	W / S
ECO-FEATURES:	100% Recycled Content. Eco-Conscious Manufacturing. GreenShield Finish.



Pebble



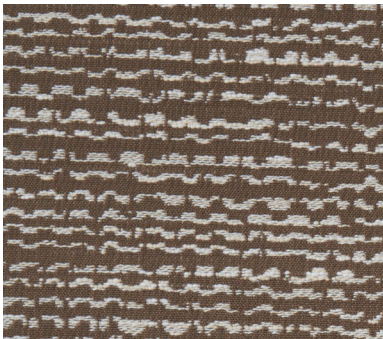
PE01 Marble



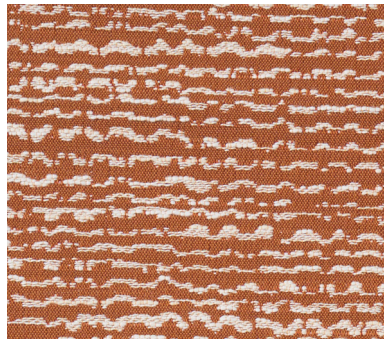
PE02 Shale



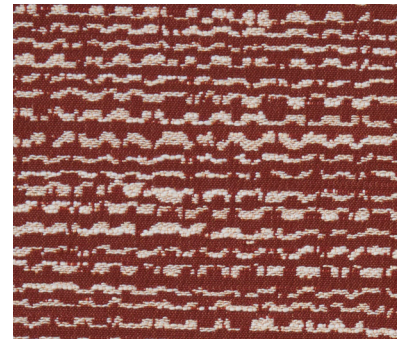
PE03 Flint



PE04 Granite



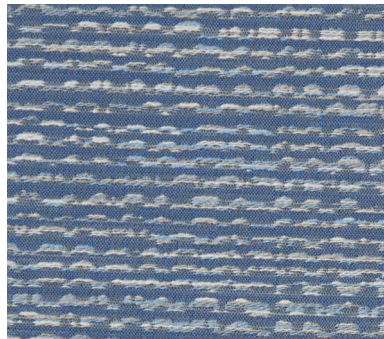
PE05 Tiger's Eye



PE06 Sunstone



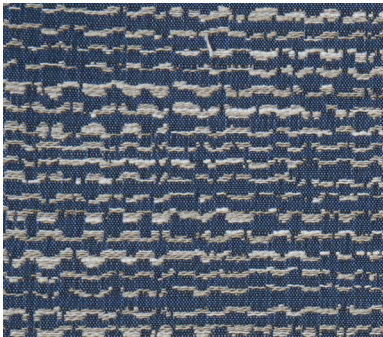
PE07 Green Opal



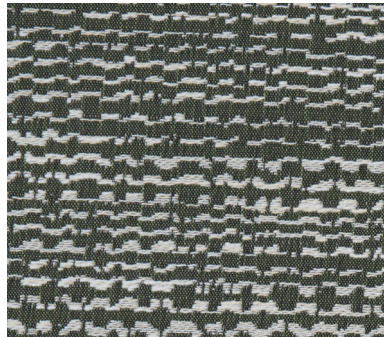
PE08 Topaz



PE11 Sandstone



PE09 Lapis



PE10 Moonstone

Pebble

Content:

73% Post Consumer Polyester,
27% Nylon

Finish:

Defend Free water repellent

Backing: None

Grade: 4

Width:

55"

Weight:

17.89 oz / LY

Country Of Origin:

USA

Repeat:

18.5" V x 9.5" H

Pattern Direction:

Up the Roll

Abrasion:

100,000 double rubs, Wyzenbeek*

Cleaning Code:

WSB

Bleach Cleanable:

10:1 Water:Bleach

Breaking Strength:

ASTM-D5034-21
Pass

Cal 117 2013:

Pass

Environmental Benefits:

PFAS Free, No added Flame
Retardant chemicals, No added
anti-bacterial / anti-microbial
chemicals, Lead free, Heavy
metal free, Formaldehyde free,
BPA free

Certificates & Standards:

Healthier Hospitals Compliant

Flammability Notes:

FR Free

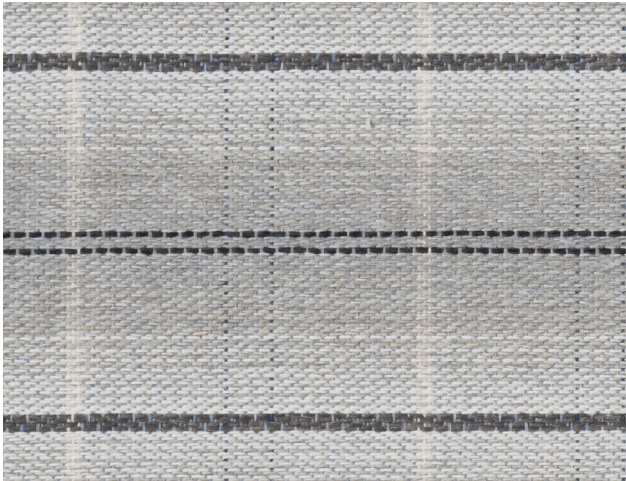
ACT Symbols:

**Abrasion test results exceeding ACT
Performance Guidelines are not an
indicator of product lifespan. Multiple
factors affect fabric durability and
appearance retention.*

***ACT® Registered Certification Marks*



Plaid Perfect



PL01 Granite



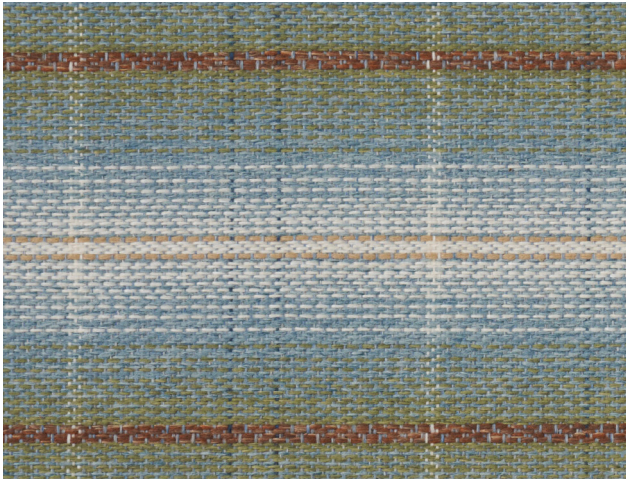
PL02 Ivory



PL03 Bisque



PL05 Blue



PL04 Horizon

Plaid Perfect

Content:

77% post consumer polyester,
23% virgin polyester

Finish:

Zero Flourine Finish

Backing: Laytex Acrylic

Grade: 2

Width:

54"

Weight:

14.4 oz / LY

Country Of Origin:

USA

Repeat:

3.6" V x 3.6" H

Pattern Direction:

Up the Roll

Abrasion:

66,000 double rubs, Wyzenbeek*

Cleaning Code:

WSB

Bleach Cleanable:

10:1 Water:Bleach

Breaking Strength:

ASTM-D5034-21

Pass

Cal 117 2013:

Pass

Environmental Benefits:

PFAS Free, No added Flame Retardant chemicals, Environmentally friendly made of recycled soda bottles, No added anti-bacterial / anti-microbial chemicals, Lead free, Heavy metal free, Formaldehyde free, BPA free

Certificates & Standards:

Healthier Hospitals Compliant

Flammability Notes:

FR Free

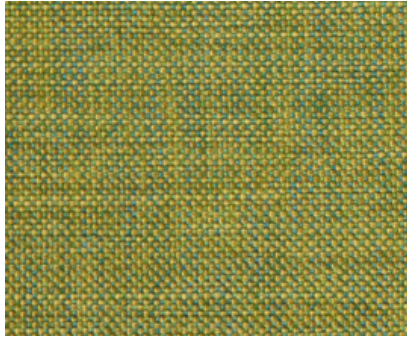
ACT Symbols:

**Abrasion test results exceeding ACT Performance Guidelines are not an indicator of product lifespan. Multiple factors affect fabric durability and appearance retention.*

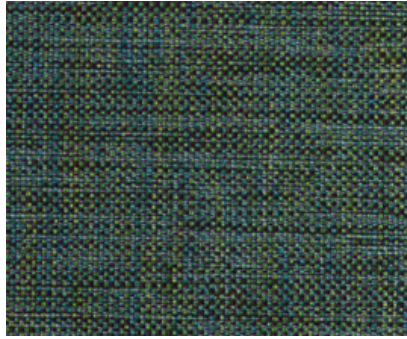
***ACT® Registered Certification Marks*



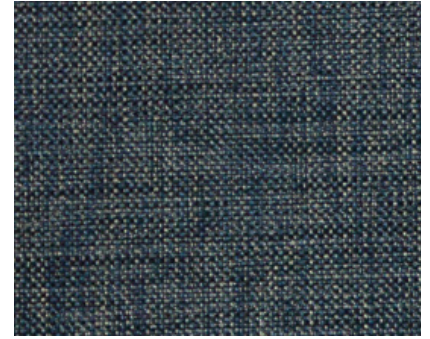
Rhyme



RY-09 Margarita



RY-07 Blue Bayou



RY-11 Bell Bottom



RY-01 Castaway



RY-14 Cottage Side



RY-16 Moon Shadow



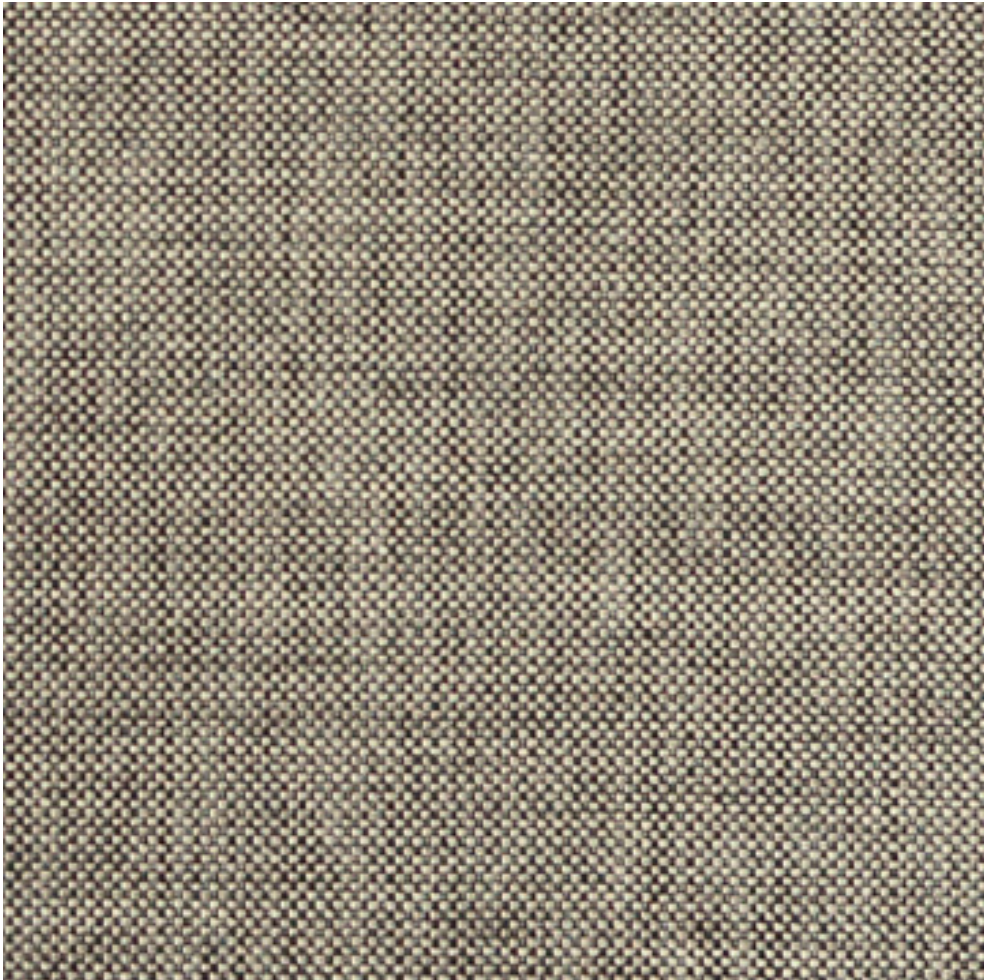
RY-18 Cajun Kick



RY-02 Wild Wood

Rhyme

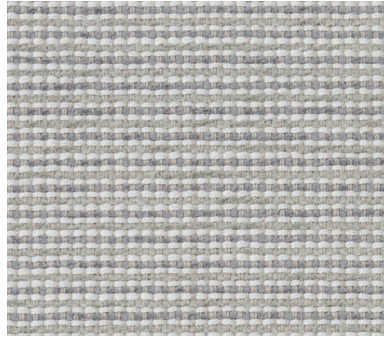
CONTENT:	100% Polyester
FINISH:	Resilience TX
BACKING:	Synthetic rubber
WIDTH: 54"	REPEAT: None
PATTERN DIRECTION:	Shown up the roll
APPLICATION:	Heavy Duty Upholstery
DURABILITY:	100,000+ Double Rubs
FLAMMABILITY CLASS:	1. California Technical Bulletin 117 : 2013. 2. NFPA260
CLEANING CODE:	S - spot clean using a water-free solvent or dry cleaning product. Cleaning by a professional service is recommended.



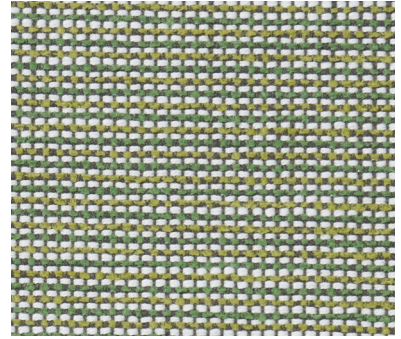
Tally



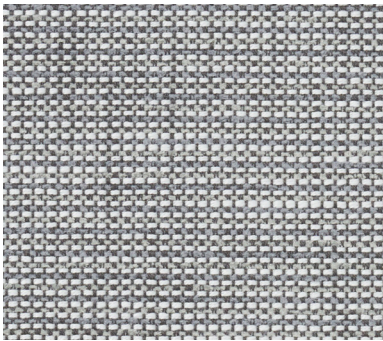
TA01 Harvest



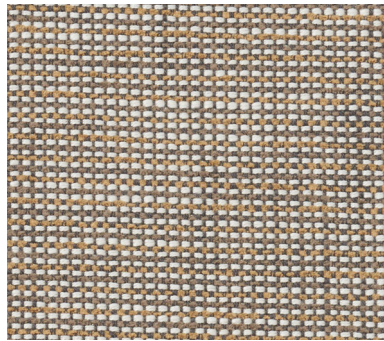
TA02 Dusty



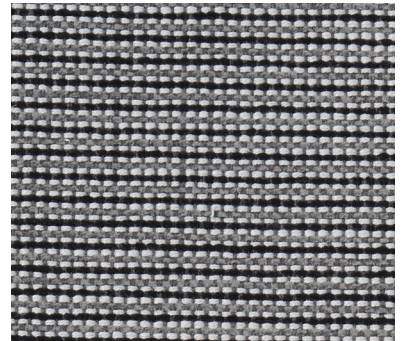
TA03 Pickled



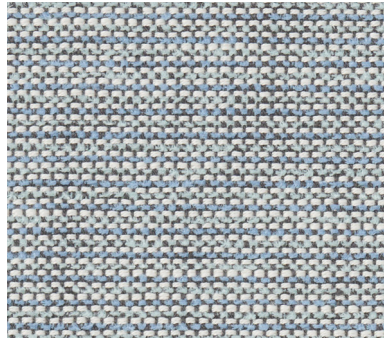
TA04 Aluminum



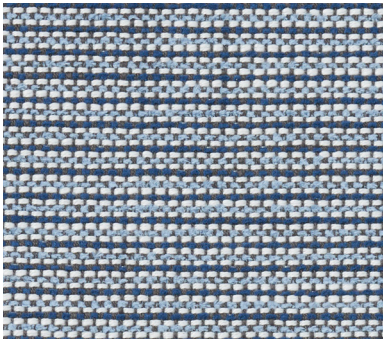
TA05 Autumn



TA06 Sunset



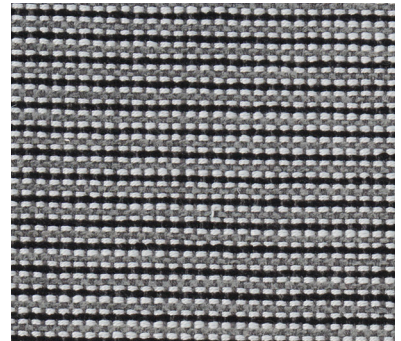
TA07 Summer Haze



TA08 Bungalow Blue



TA09 Glowing



TA10 Chestnut

Tally

Content:

95.04% polyester, 4.96% Olefin

Finish:

Eco Ease water repellent with standard backing

Grade: 3

Width:

55"

Weight:

19.984 oz / LY

Country Of Origin:

USA

Repeat:

.25" V x 0.125" H

Pattern Direction:

Up the Roll

Abrasion:

100,000 double rubs, Wyzenbeek*

Cleaning Code:

WSB

Bleach Cleanable:

10:1 Water:Bleach

Breaking Strength:

ASTM-D5034-90
Pass

Cal 117 2013:

Pass

Environmental Benefits:

PFAS Free, No added Flame Retardant chemicals, Mildew Resistant, No added anti-bacterial / anti-microbial chemicals, Lead free, Heavy metal free, Formaldehyde free, BPA free

Certificates & Standards:

Greenguard Certified
Healthier Hospitals Compliant

Flammability Notes:

FR Free

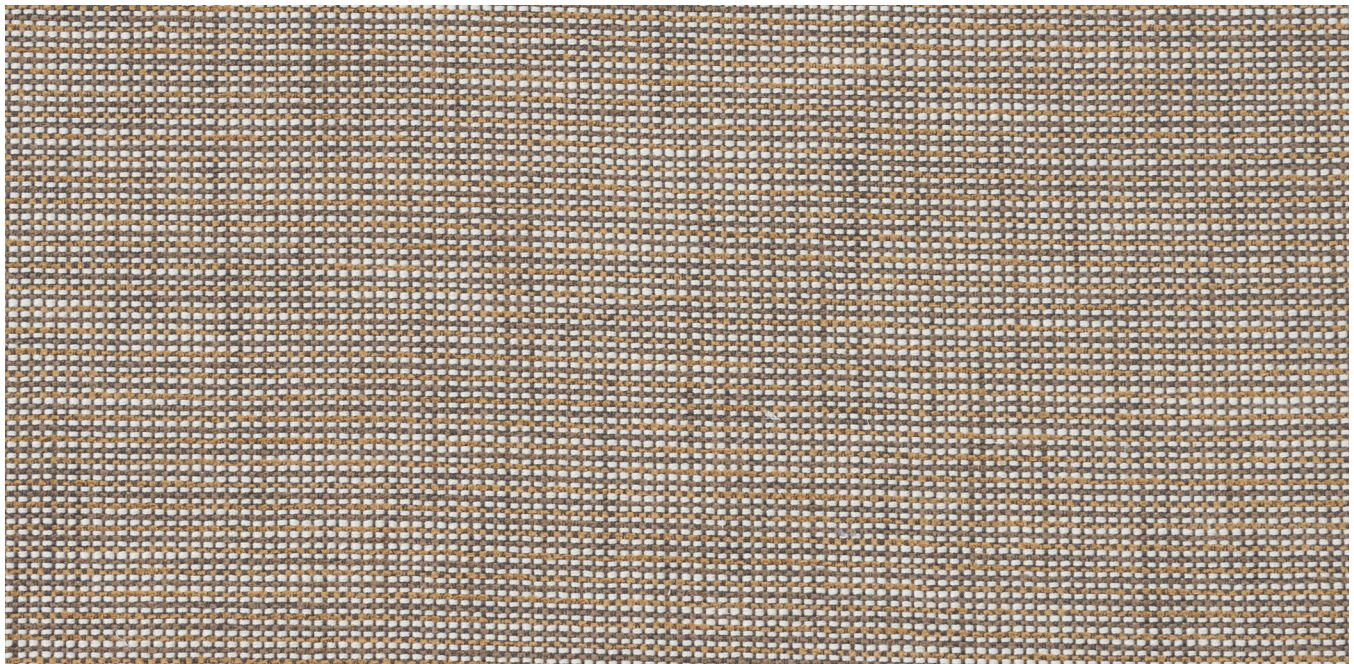
Application:

Indoor / Outdoor

ACT Symbols:

**Abrasion test results exceeding ACT Performance Guidelines are not an indicator of product lifespan. Multiple factors affect fabric durability and appearance retention.*

***ACT® Registered Certification Marks*



Tulip



Escape TU-01



Honeybee TU-02



Teal TU-04




Red Hot TU-05

Tulip

DESIGN:	Paul Brayton Designs Exclusive
CONTENT:	74% Polyester (16% Post Consumer) & 26% Nylon
FINISH:	Defend (SR) Airo/Frame
BACKING:	Light Acrylic
WIDTH: 54"	REPEAT: 9" V x 9" H
PATTERN DIRECTION:	Shown up the roll
APPLICATION:	Heavy Duty Upholstery
DURABILITY:	100,000+ Double Rubs - Wyzenbeek
FLAMMABILITY CLASS:	California Technical Bulletin 117: 2013. UFAC, Class 1. NFPA-260, Class 1
CLEANING CODE:	W / S



 **WARNING:** Cancer and Reproductive Harm. For more information go to www.P65Warnings.ca.gov

Woodland



WD-01 Frost



WD-03 Sky



WD-02 Mist



WD-04 Gem

Woodland

DESIGN:	Paul Brayton Designs Exclusive
CONTENT:	77% Post Consumer Polyester and 23% Nylon
FINISH:	Defend (SR) / Airo / Frame
BACKING:	Light Acrylic
WIDTH: 55"	REPEAT: 27.5" H x 27.75" V
PATTERN DIRECTION:	Shown up the roll
APPLICATION:	Heavy Duty Upholstery
DURABILITY:	100,000+ Double Rubs - Wyzenbeek
FLAMMABILITY CLASS:	1. California Technical Bulletin 117 : 2013.
CLEANING CODE:	W/S/BC 4:1 Water to Bleach Solution



ALMOST® is manufactured using 100% microscopic nylon fibers that are entangled, like the fibers in collagen. This construction creates a breathable material that is comfortable in all temperatures, beautiful in appearance and feels natural.

The colors and textures are integrated with heat and pressure, directly into the base structure, creating a surface that will never delaminate. ALMOST® is not made of two layers bonded together, but one single ply. It is also highly resistant to cracking, tearing, puncture and fading.



- Exceeds 250,000 Double Rubs
- 10-year Warranty
- Hydrolysis: 10+ Weeks
- Stain Resistant
- Bleach Cleanable (except Suede)
- Liquid impermeable
- FR Free

CUSTOM COLOR MATCH

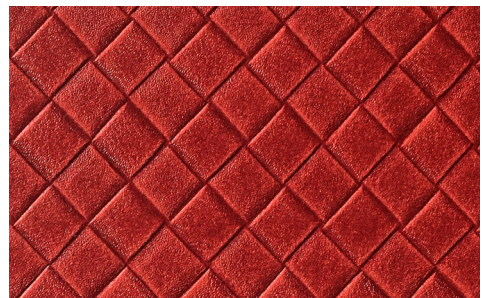
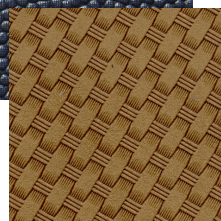
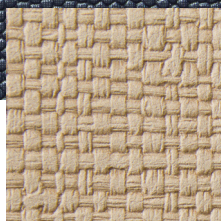
ALMOST[®] faux leather can be customized to fit any design or aesthetic, making it the perfect choice for your interior design.

Elevate your brand and custom color match any ALMOST pattern to a Pantone number or swatch of your choice.

[CLICK TO GET STARTED](#)

EMBOSS FOR EXTRA EFFECT

Create rich textures and dramatically transform the impact of your interior.



[CLICK TO GET STARTED](#)

All of the ALMOST[®] products in this binder can be customized.

ALMOST®



AM20 Dover



AM23 Stormy Blue



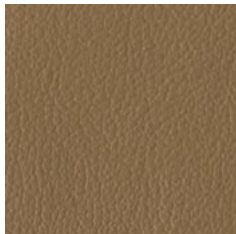
AM24 Iron



AM25 Bayside Blue



AM39 Smoke



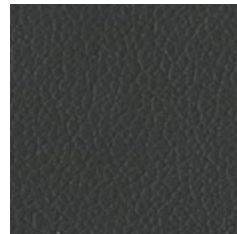
AM141 Honey



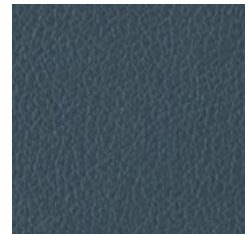
AM46 Putty



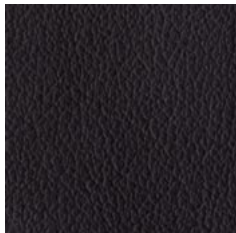
AM47 Mushroom



AM48 Greige



AM52 Bluestone



AM56 Brazil



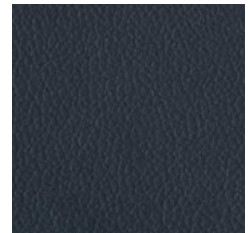
AM80 Cameo



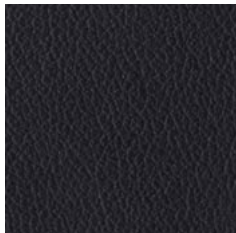
AM81 Oyster Grey



AM83 Taupe



AM87 Indigo



AM89 Jet Black



AM98 Oxford Brown

ALMOST®

Content:
100% Nylon

Grade: 4

Width:
54"

Weight:
10.50 oz / LY

Country Of Origin:
USA

Pattern Direction:
Up the Roll

Abrasion:
250,000 double rubs, Wyzenbeek*

Cleaning Code:
WSB

Bleach Cleanable:
10:1 Water:Bleach

Hydrolysis:
10 Weeks

Breaking Strength:
ASTM-D5034-90

AATC-8 / Crocking:
Pass

NFPA 260 (UFAC):
Pass

Cal 117 2013:
Pass

ASTME-84:
Additional backing required,
contact customer service for
pricing

Environmental Benefits:
PFAS Free, PVC Free,
Formaldehyde Free, Poly
Fluorinated Compounds Free,
Antimicrobials Antibacterials
Free, Flame Retardent Free,
Phthalate Free

Certificates & Standards:
Healthier Hospitals Compliant

Flammability Notes:
FR Free

ACT Symbols:



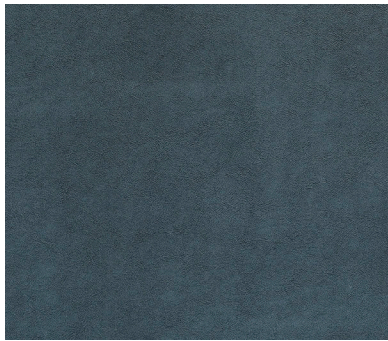
Notes:
Additional backing may be
added to meet flame code ASTM
E84 for Panel and Wallcoverings
applications. Contact Customer
Service for pricing.

**Abrasion test results exceeding ACT
Performance Guidelines are not an
indicator of product lifespan. Multiple
factors affect fabric durability and
appearance retention.*

***ACT® Registered Certification Marks*



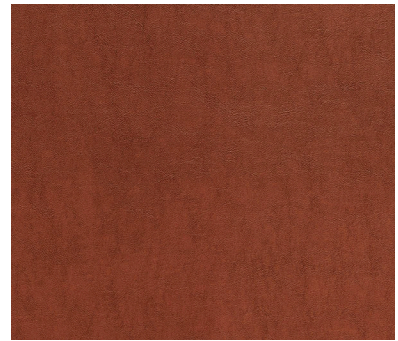
ALMOST® Asheville



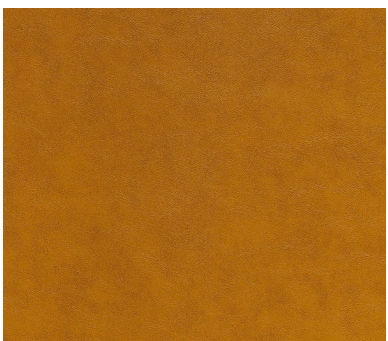
ASV001 Blue Ridge



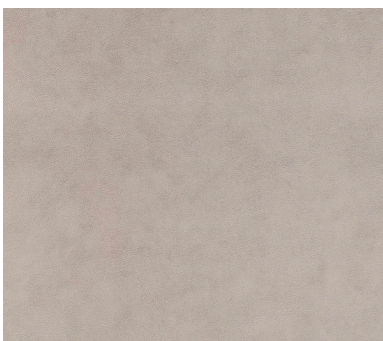
ASV002 Flaxen



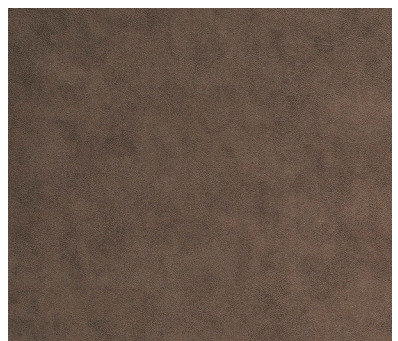
ASV003 Auburn



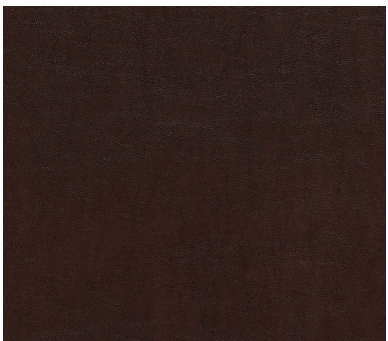
ASV004 Amber



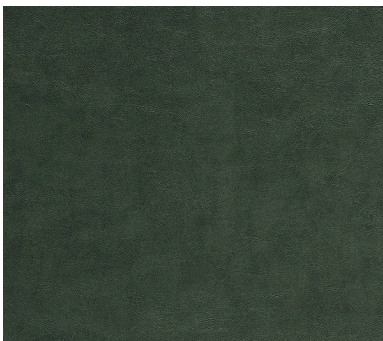
ASV005 Ashe



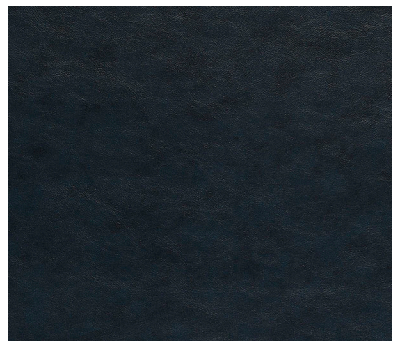
ASV006 Pebble Pathway



ASV007 Mahogany



ASV008 Forest



ASV009 Smoky Mountain

ALMOST® Asheville

Content:
100% Nylon

Grade: 5

Width:
54"

Weight:
13.20 oz / LY

Country Of Origin:
USA

Pattern Direction:
Up the Roll

Abrasion:
250,000 double rubs, Wyzenbeek*

Cleaning Code:
WSB

Bleach Cleanable:
10:1 Water:Bleach

Hydrolysis:
10 Weeks

Breaking Strength:
ASTM-D5034-90

AATC-8 / Crocking:
Pass

NFPA 260 (UFAC):
Pass

Cal 117 2013:
Pass

ASTME-84:
Additional backing required,
contact customer service for
pricing

Environmental Benefits:
PFAS Free, PVC Free,
Formaldehyde Free, Poly
Fluorinated Compounds Free,
Antimicrobials Antibacterials
Free, Flame Retardent Free,
Phthalate Free

Certificates & Standards:
Healthier Hospitals Compliant

Flammability Notes:
FR Free

ACT Symbols:

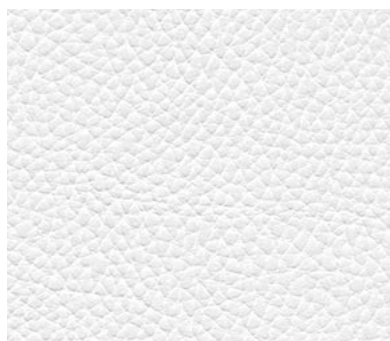

Notes:
Additional backing may be
added to meet flame code ASTM
E84 for Panel and Wallcoverings
applications. Contact Customer
Service for pricing.

**Abrasion test results exceeding ACT
Performance Guidelines are not an
indicator of product lifespan. Multiple
factors affect fabric durability and
appearance retention.*

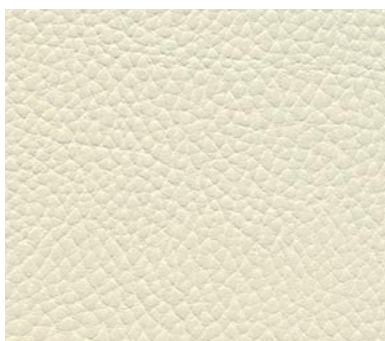
***ACT® Registered Certification Marks*



ALMOST® **Avante**



AAV101 Bright White



AAV102 Cream



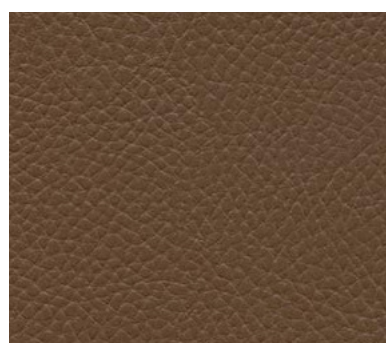
AAV103 Atlantic Sand



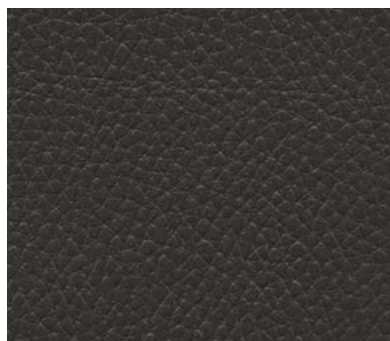
AAV104 Sand Castle



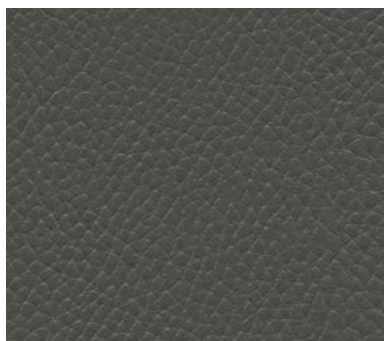
AAV105 Porcini



AAV106 Sorrell



AAV108 Molten Chocolate



AAV109 Elephant



AAV110 Navy Marine



AAV111 Pitch

ALMOST® Avante

Content:
100% Nylon

Grade: 5

Width:
54"

Weight:
10.50 oz / LY

Country Of Origin:
USA

Pattern Direction:
Up the Roll

Abrasion:
250,000 double rubs, Wyzenbeek*

Cleaning Code:
WSB

Bleach Cleanable:
10:1 Water:Bleach

Hydrolysis:
10 Weeks

Breaking Strength:
ASTM-D5034-90

AATC-8 / Crocking:
Pass

NFPA 260 (UFAC):
Pass


Cal 117 2013:
Pass

ASTME-84:
Additional backing required,
contact customer service for
pricing

Environmental Benefits:
PFAS Free, PVC Free,
Formaldehyde Free, Poly
Fluorinated Compounds Free,
Antimicrobials Antibacterials
Free, Flame Retardent Free,
Phthalate Free

Certificates & Standards:
Healthier Hospitals Compliant

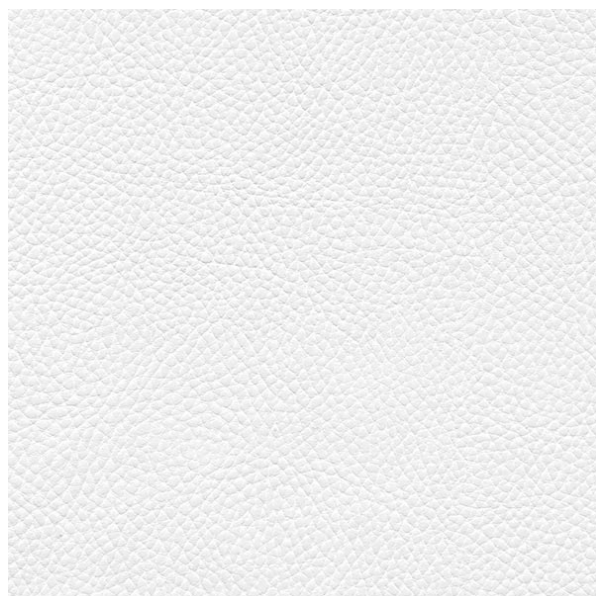
Flammability Notes:
FR Free

ACT Symbols:


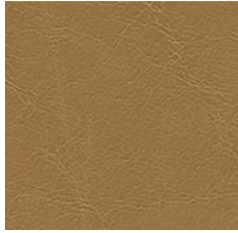
Notes:
Additional backing may be
added to meet flame code ASTM
E84 for Panel and Wallcoverings
applications. Contact Customer
Service for pricing.

**Abrasion test results exceeding ACT
Performance Guidelines are not an
indicator of product lifespan. Multiple
factors affect fabric durability and
appearance retention.*

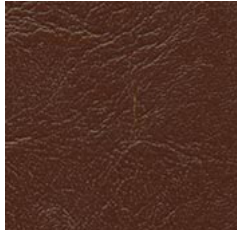
***ACT® Registered Certification Marks*



ALMOST® **Barcelona**



ABR901 Tawny



ABR902 Syrup



ABR903 Port



ABR904 Nearly Black



ABR905 French Roast

ALMOST® **Cambridge**



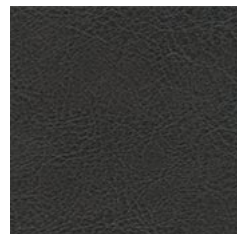
ACM201 Log Cabin



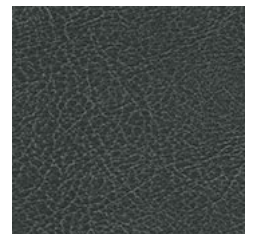
ACM202 Dark Pecan



ACM203 Caramel Nut



ACM204 Extra Dark



ACM206 Cool Iron

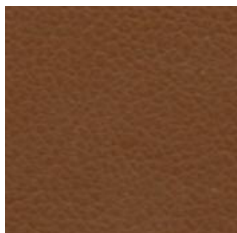


ACM207 Warm Grey

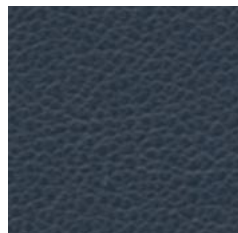
ALMOST® **Icon**



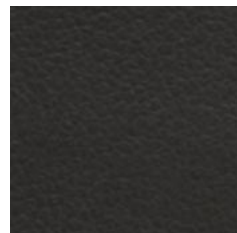
AICN215 Safari



AICN216 Saddle



AICN217 Sapphire



AICN219 Grey

ALMOST® Barcelona / Cambridge / Icon

Content:
100% Nylon

Barcelona Grade: 5
Cambridge Grade: 4
Icon Grade: 5

Width:
54"

Weight:
10.50 oz / LY

Country Of Origin:
USA

Pattern Direction:
Up the Roll

Abrasion:
250,000 double rubs, Wyzenbeek*

Cleaning Code:
WSB

Bleach Cleanable:
10:1 Water:Bleach

Hydrolysis:
10 Weeks

Breaking Strength:
ASTM-D5034-90

AATC-8 / Crocking:
Pass

NFPA 260 (UFAC):
Pass

Cal 117 2013:
Pass

ASTME-84:
Additional backing required,
contact customer service for
pricing

Environmental Benefits:
PFAS Free, PVC Free,
Formaldehyde Free, Poly
Fluorinated Compounds Free,
Antimicrobials Antibacterials
Free, Flame Retardent Free,
Phthalate Free

Certificates & Standards:
Healthier Hospitals Compliant

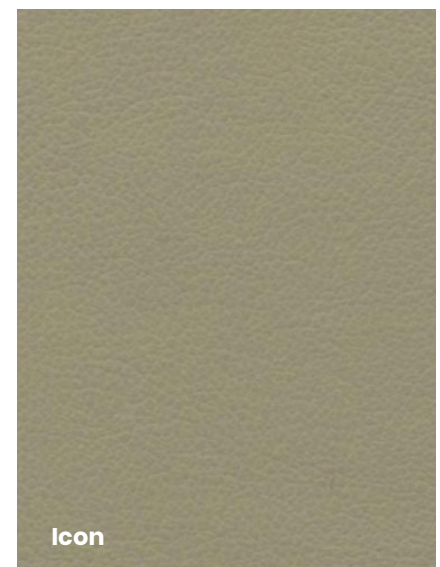
Flammability Notes:
FR Free

ACT Symbols:

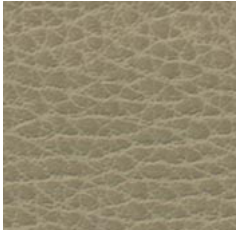

Notes:
Additional backing may be
added to meet flame code ASTM
E84 for Panel and Wallcoverings
applications. Contact Customer
Service for pricing.

**Abrasion test results exceeding ACT
Performance Guidelines are not an
indicator of product lifespan. Multiple
factors affect fabric durability and
appearance retention.*

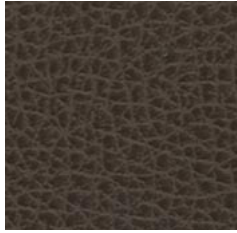
***ACT® Registered Certification Marks*



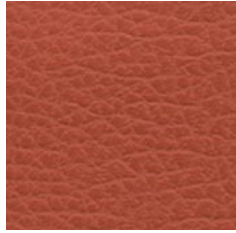
ALMOST[®] Buffed



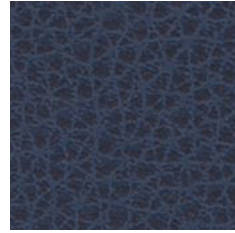
ABF950 Cafe Creme



ABF951 Cavern

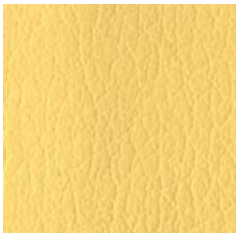


ABF952 Day Lily



ABF953 Twilight

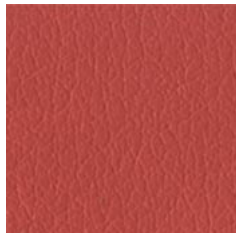
ALMOST[®] Glove



AGV400 Lemon



AGV402 Oatmeal



AGV405 Coral



AGV409 Magenta



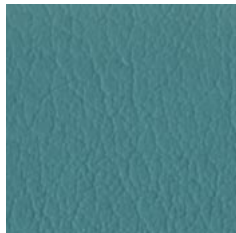
AGV411 Lavender



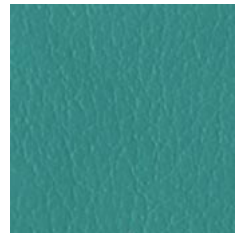
AGV412 Orchid



AGV413 Cornflower



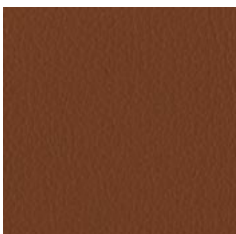
AGV415 Lupine



AGV416 Turquoise

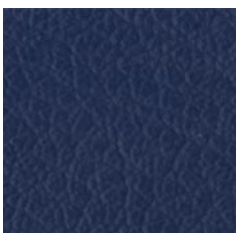


AGV420 Kiwi

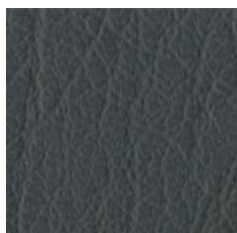


AGV424 Pretzel

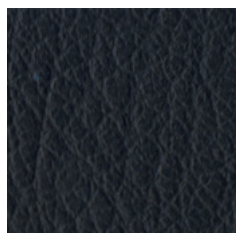
ALMOST[®] Natural



ANL926 Cobalt



ANL943 Cinder



ANL944 Panther

ALMOST® **Buffed/Glove/Natural**

Content:
100% Nylon

Grade: 4

Width:
54"

Weight:
10.50 oz / LY

Country Of Origin:
USA

Pattern Direction:
Up the Roll

Abrasion:
250,000 double rubs, Wyzenbeek*

Cleaning Code:
WSB

Bleach Cleanable:
10:1 Water:Bleach

Hydrolysis:
10 Weeks

Breaking Strength:
ASTM-D5034-90

AATC-8 / Crocking:
Pass

NFPA 260 (UFAC):
Pass

Cal 117 2013:
Pass

ASTME-84:
Additional backing required,
contact customer service for
pricing

Environmental Benefits:
PFAS Free, PVC Free,
Formaldehyde Free, Poly
Fluorinated Compounds Free,
Antimicrobials Antibacterials
Free, Flame Retardent Free,
Phthalate Free

Certificates & Standards:
Healthier Hospitals Compliant

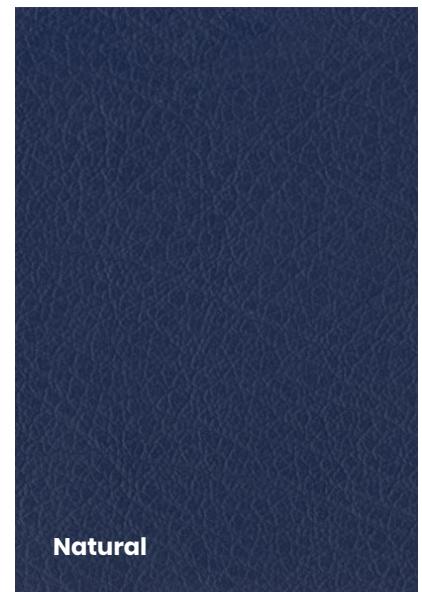
Flammability Notes:
FR Free

ACT Symbols:


Notes:
Additional backing may be
added to meet flame code ASTM
E84 for Panel and Wallcoverings
applications. Contact Customer
Service for pricing.

**Abrasion test results exceeding ACT
Performance Guidelines are not an
indicator of product lifespan. Multiple
factors affect fabric durability and
appearance retention.*

***ACT® Registered Certification Marks*



ALMOST[®] Calf



ACF802 Light Bisque



ACF803 Bisque



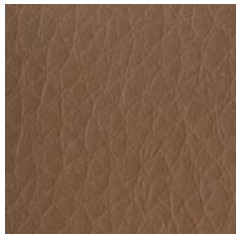
ACF805 Straw



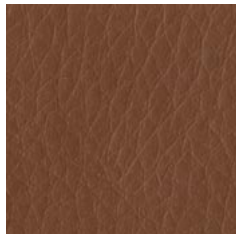
ACF806 Khaki



ACF807 Sahara



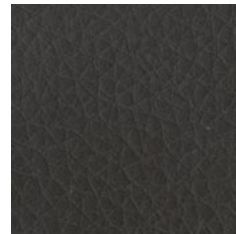
ACF808 Ginger



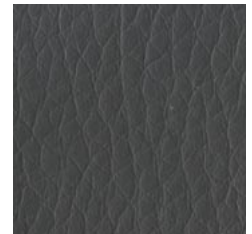
ACF809 Spice



ACF813 Smoke



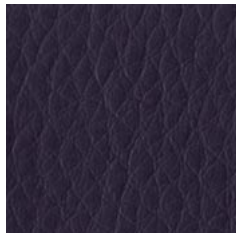
ACF815 Nutbrown



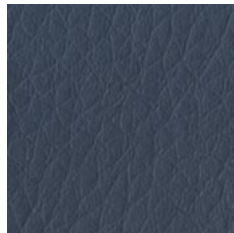
ACF816 Lead



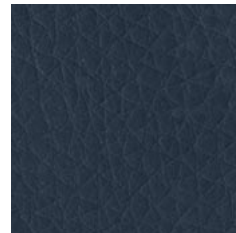
ACF818 Merlot



ACF819 Amethyst



ACF820 Iris



ACF822 Columbine



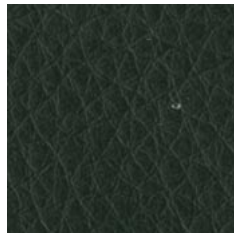
ACF823 Midnight



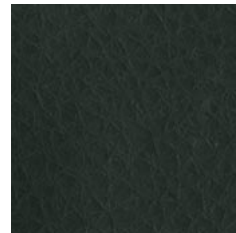
ACF824 Blue Spruce



ACF825 Loden



ACF828 Fern Green



ACF829 Seaweed



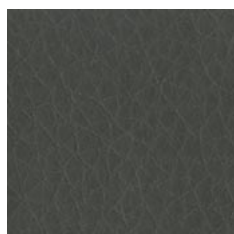
ACF830 Carbon



ACF833 Buckskin



ACF840 Cinnamon



ACF848 Portabella

ALMOST® Calf

Content:
100% Nylon

Grade: 4

Width:
54"

Weight:
10.50 oz / LY

Country Of Origin:
USA

Pattern Direction:
Up the Roll

Abrasion:
250,000 double rubs, Wyzenbeek*

Cleaning Code:
WSB

Bleach Cleanable:
10:1 Water:Bleach

Hydrolysis:
10 Weeks

Breaking Strength:
ASTM-D5034-90

AATC-8 / Crocking:
Pass

NFPA 260 (UFAC):
Pass

Cal 117 2013:
Pass

ASTME-84:
Additional backing required,
contact customer service for
pricing

Environmental Benefits:
PFAS Free, PVC Free,
Formaldehyde Free, Poly
Fluorinated Compounds Free,
Flame Retardent Free, Phthalate
Free, Antimicrobial / Antibacterial
Free

Certificates & Standards:
Healthier Hospitals Compliant

Flammability Notes:
FR Free

ACT Symbols:



Notes:
Additional backing may be
added to meet flame code ASTM
E84 for Panel and Wallcoverings
applications. Contact Customer
Service for pricing.

**Abrasion test results exceeding ACT
Performance Guidelines are not an
indicator of product lifespan. Multiple
factors affect fabric durability and
appearance retention.*

***ACT® Registered Certification Marks*



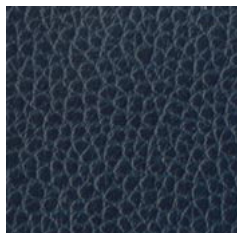
ALMOST[®] Classic



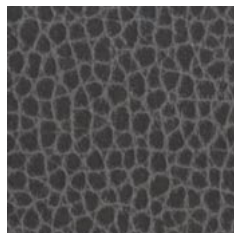
ACL320 Saddle



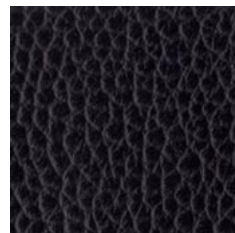
ACL321 Coffee



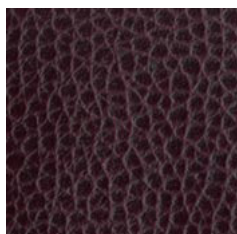
ACL323 Sapphire



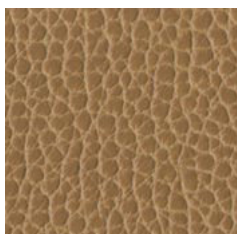
ACL325 Slate



ACL326 Black Granite

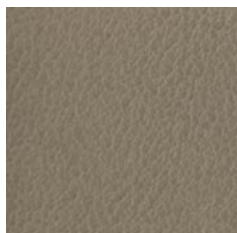


ACL327 Black Cherry



ACL328 Caramel

ALMOST[®] Matte



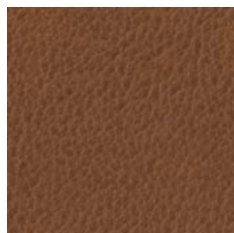
AMT767 Statue



AMT769 Warm Taupe



AMT770 Dove



AMT771 Toasted

ALMOST® Classic / Matte

Content:
100% Nylon

Grade: 4

Width:
54"

Weight:
10.50 oz / LY

Country Of Origin:
USA

Pattern Direction:
Up the Roll

Abrasion:
250,000 double rubs, Wyzenbeek*

Cleaning Code:
WSB

Bleach Cleanable:
10:1 Water:Bleach

Hydrolysis:
10 Weeks

Breaking Strength:
ASTM-D5034-90

AATC-8 / Crocking:
Pass

NFPA 260 (UFAC):
Pass

Cal 117 2013:
Pass

ASTME-84:
Additional backing required,
contact customer service for
pricing

Environmental Benefits:
PFAS Free, PVC Free,
Formaldehyde Free, Poly
Fluorinated Compounds Free,
Antimicrobials Antibacterials
Free, Flame Retardent Free,
Phthalate Free

Certificates & Standards:
Healthier Hospitals Compliant

Flammability Notes:
FR Free

ACT Symbols:



Notes:
Additional backing may be
added to meet flame code ASTM
E84 for Panel and Wallcoverings
applications. Contact Customer
Service for pricing.

**Abrasion test results exceeding ACT
Performance Guidelines are not an
indicator of product lifespan. Multiple
factors affect fabric durability and
appearance retention.*

***ACT® Registered Certification Marks*



ALMOST[®] Nappa



ANA500 Sunflower



ANA501 Cappuccino



ANA502 Fawn



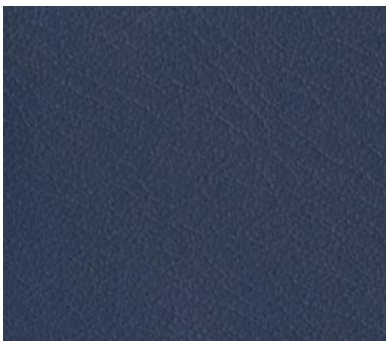
ANA504 Tangerine



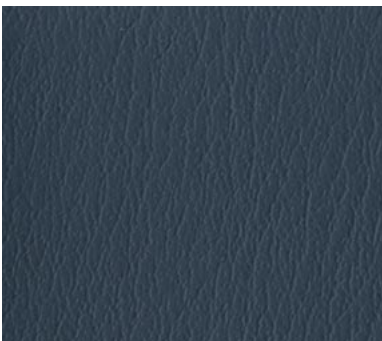
ANA505 Cardinal



ANA509 Concord



ANA511 Bluebell



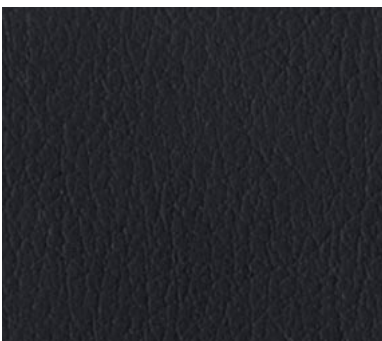
ANA512 French Blue



ANA514 Lagoon



ANA517 Sage



ANA520 Black Ink

ALMOST[®] Nappa

Content:
100% Nylon

Grade: 4

Width:
54"

Weight:
10.50 oz / LY

Country Of Origin:
USA

Pattern Direction:
Up the Roll

Abrasion:
250,000 double rubs, Wyzenbeek*

Cleaning Code:
WSB

Bleach Cleanable:
10:1 Water:Bleach

Hydrolysis:
10 Weeks

Breaking Strength:
ASTM-D5034-90

AATC-8 / Crocking:
Pass

NFPA 260 (UFAC):
Pass

Cal 117 2013:
Pass

ASTME-84:
Additional backing required,
contact customer service for
pricing

Environmental Benefits:
PFAS Free, PVC Free,
Formaldehyde Free, Poly
Fluorinated Compounds Free,
Antimicrobials Antibacterials
Free, Flame Retardent Free,
Phthalate Free

Certificates & Standards:
Healthier Hospitals Compliant

Flammability Notes:
FR Free

ACT Symbols:


Notes:
Additional backing may be
added to meet flame code ASTM
E84 for Panel and Wallcoverings
applications. Contact Customer
Service for pricing.

**Abrasion test results exceeding ACT
Performance Guidelines are not an
indicator of product lifespan. Multiple
factors affect fabric durability and
appearance retention.*

***ACT[®] Registered Certification Marks*



ALMOST® Pearl



APL704 Fire



APL720 Black Pearl



APL722 Pewter



APL723 Alloy

ALMOST® Vogue



AGGV301 Pearl Gelato



AGGV302 Mercury

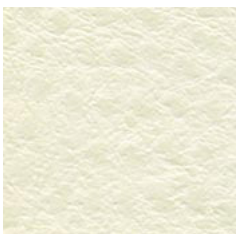


AGGV306 Tan



AGGV310 Quarry

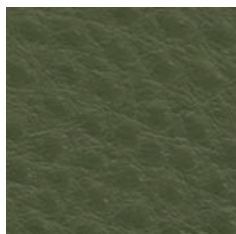
ALMOST® Ostrich



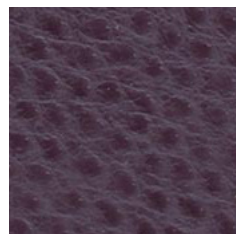
AOS_830 Winter



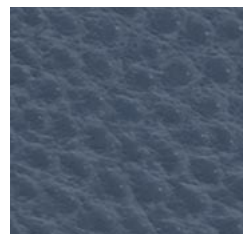
AOS_833 Sand Dune



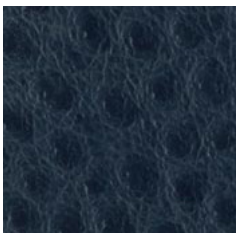
AOS_854 Green Garden



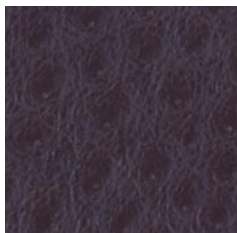
AOS_856 Grape



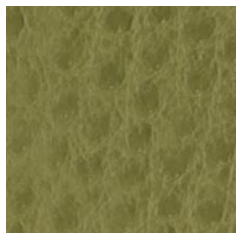
AOS_857 Blue Bird



AOS823 Baltic



AOS824 Aubergine



AOS826 Alfalfa

ALMOST[®] Pearl / Vogue / Ostrich

Content:
100% Nylon

Pearl Grade: 4
Vogue Grade: 5
Ostrich Grade: 4

Width:
54"

Weight:
10.50 oz / LY

Country Of Origin:
USA

Pattern Direction:
Up the Roll

Abrasion:
250,000 double rubs, Wyzenbeek*

Cleaning Code:
WSB

Bleach Cleanable:
10:1 Water:Bleach

Hydrolysis:
10 Weeks

Breaking Strength:
ASTM-D5034-90

AATC-8 / Crocking:
Pass

NFPA 260 (UFAC):
Pass

Cal 117 2013:
Pass

ASTME-84:
Additional backing required,
contact customer service for
pricing

Environmental Benefits:
PFS Free, PVC Free, Formaldehyde
Free, Poly Fluorinated
Compounds Free, Antimicrobials
Antibacterials Free, Flame
Retardent Free, Phthalate Free

Certificates & Standards:
Healthier Hospitals Compliant

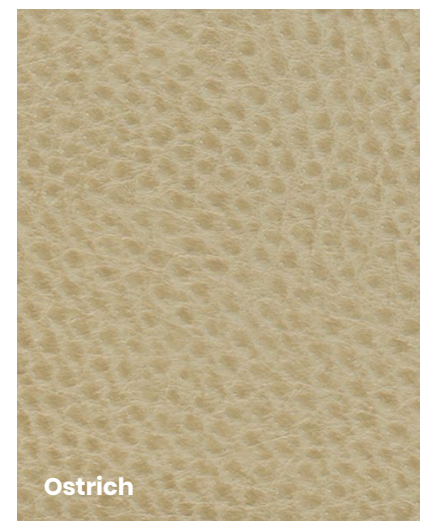
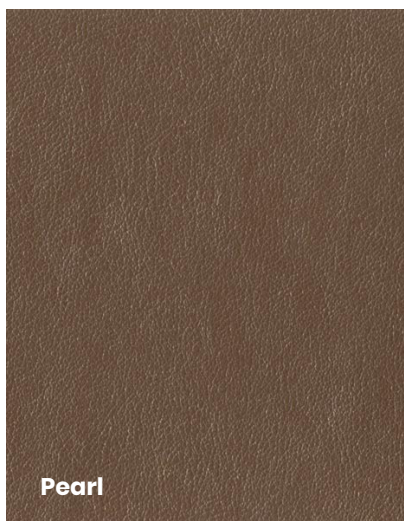
Flammability Notes:
FR Free

ACT Symbols:


Notes:
Additional backing may be
added to meet flame code ASTM
E84 for Panel and Wallcoverings
applications. Contact Customer
Service for pricing.

**Abrasion test results exceeding ACT
Performance Guidelines are not an
indicator of product lifespan. Multiple
factors affect fabric durability and
appearance retention.*

***ACT[®] Registered Certification Marks*



ALMOST® **Suede**



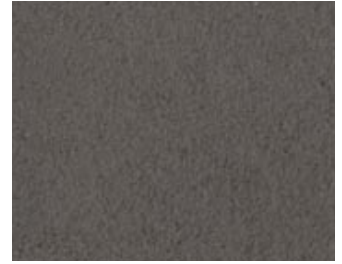
AMSI003 Latte



AMSI004 Foggy Bay



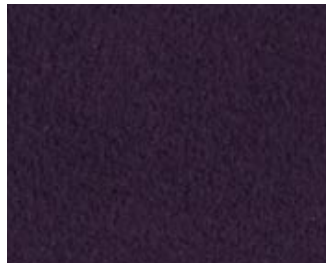
AMSI026 Doe



AMSI033 Seal



AMSI036 Grey Whale



AMSI072 Raisin



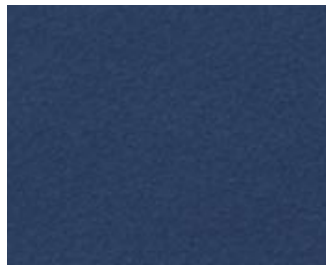
AMSI080 Battleship Grey



AMSI105 Blonde



AMSI009 Mink



AMSI113 Sapphire

ALMOST® Suede

CONTENT: 100% Nylon

WIDTH: 54"

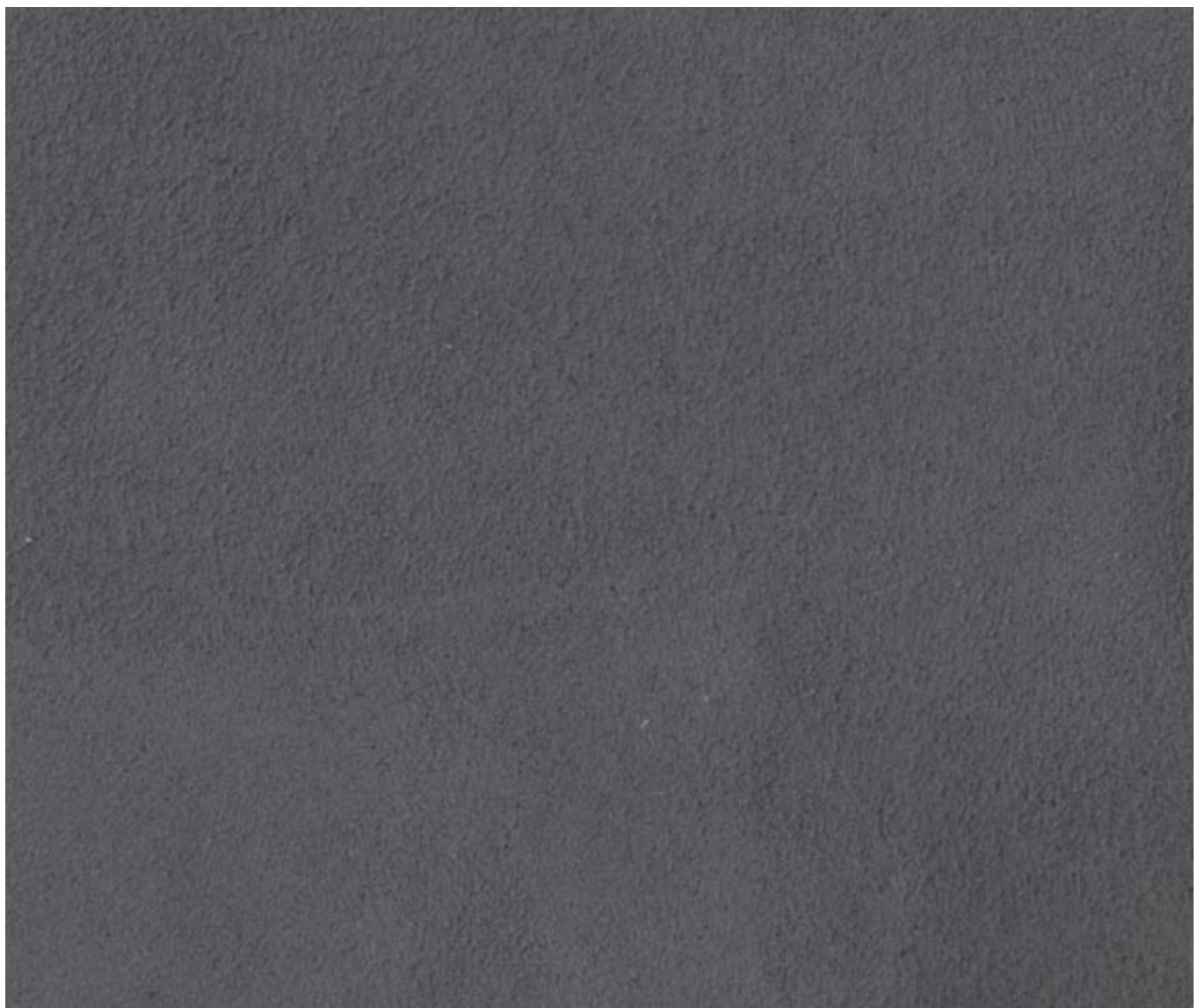
APPLICATION: Heavy Duty Upholstery

DURABILITY: 250,000+ Double Rubs - Wyzenbeek

FLAMMABILITY CLASS: 1. California Tech. Bulletin 117 Sec. E Class 1 2. UFAC Class 1
3. NFPA-260 Class 1

CLEANING CODE: W / S / B

(We recommend using EPA registered disinfectants as opposed to homemade dilutions whenever possible. Bleach and Water solutions must be diluted 1/10 making sure to rinse after 10 minutes.)



ALMOST® **Textura**



ATX600 Antique White



ATX602 Parchment



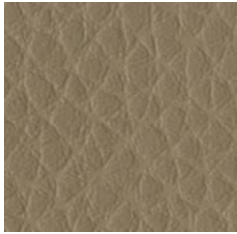
ATX603 Sandstone



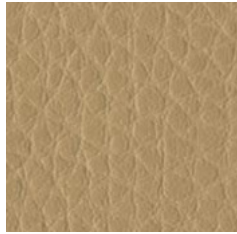
ATX604 Driftwood



ATX605 Dune



ATX606 Jute



ATX607 Buttercreme



ATX608 Pecan



ATX609 Russet



ATX610 Havana



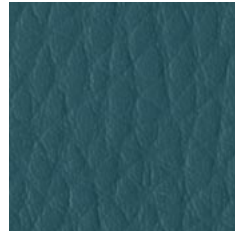
ATX613 Laurel



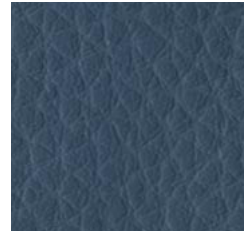
ATX614 Boxwood



ATX617 Wild Plum



ATX621 Marine



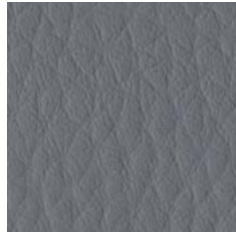
ATX622 Cape Blue



ATX622 Cape Blue



ATX626 Onyx



ATX627 Smoke Stone



ATX629 Artichoke



ATX630 Paprika



ATX631 Hazel



ATX634 Steel

ALMOST® Textura

Content:
100% Nylon

Grade: 4

Width:
54"

Weight:
10.50 oz / LY

Country Of Origin:
USA

Pattern Direction:
Up the Roll

Abrasion:
250,000 double rubs, Wyzenbeek*

Cleaning Code:
WSB

Bleach Cleanable:
10:1 Water:Bleach

Hydrolysis:
10 Weeks

Breaking Strength:
ASTM-D5034-90

AATC-8 / Crocking:
Pass

NFPA 260 (UFAC):
Pass

Cal 117 2013:
Pass

ASTME-84:
Additional backing required,
contact customer service for
pricing

Environmental Benefits:
PFAS Free, PVC Free,
Formaldehyde Free, Poly
Fluorinated Compounds Free,
Flame Retardent Free, Phthalate
Free, Antimicrobial / Antibacterial
Free

Certificates & Standards:
Healthier Hospitals Compliant

Flammability Notes:
FR Free

ACT Symbols:



Notes:
Additional backing may be
added to meet flame code ASTM
E84 for Panel and Wallcoverings
applications. Contact Customer
Service for pricing.

**Abrasion test results exceeding ACT
Performance Guidelines are not an
indicator of product lifespan. Multiple
factors affect fabric durability and
appearance retention.*

***ACT® Registered Certification Marks*



Boho



BOHO-001 Tawny



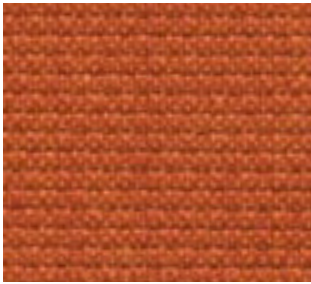
BOHO-002 Indigo Jeans



BOHO-004 Blue Note



BOHO-006 Night Owl



BOHO-007 Orange Soda



BOHO-008 Kale



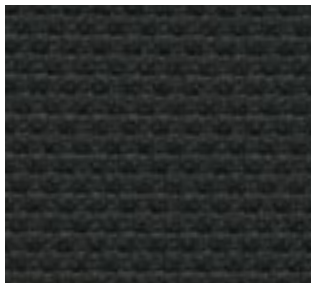
BOHO-009 Roast Coffee



BOHO-012 Grass



BOHO-014 Cotton



BOHO-101 Licorice



BOHO-102 Monterey Grey



BOHO-103 Purple Haze



BOHO-104 Tree Hugger



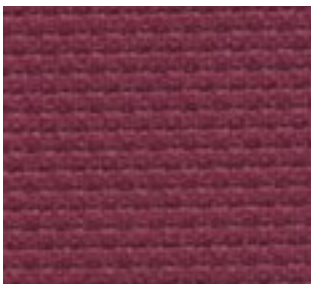
BOHO-105 Marigold



BOHO-106 Sprout



BOHO-107 Poolside



BOHO-108 Raspberry Beret

Boho

Content:

100% PVC (Phthalate Free)

Grade: 1

Standard Finish:

Resilience TX

Width:

54"

Weight:

28.00 oz / LY

Country Of Origin:

Taiwan

Standard Backing:

Brushed Polyester Knit

Pattern Direction:

Up the Roll

Abrasion:

250,000 double rubs, Wyzenbeek*

Cleaning Code:

WS

Bleach Cleanable:

10:1 Water:Bleach

Antimicrobial/Antibacterial:

Pass

Breaking Strength:

ASTM D751 06

Adhesion Coating:

Pass

Cold Crack:

-20° F CFFA-6a-2007

AATC-8 / Crocking:

Pass

NFPA 260 (UFAC):

Pass

Cal 117 2013:

Pass

ASTM G21-13 Mildew Resistance:

Pass

Environmental Benefits:

PFAS Free, PVC Free, Phthalate Free, lead Free, BPA Free, TRIC Free, Formaldehyde Free

Certificates & Standards:

HPD, Reach Compliant, RoHS Compliant

Flammability Notes:

FR Free

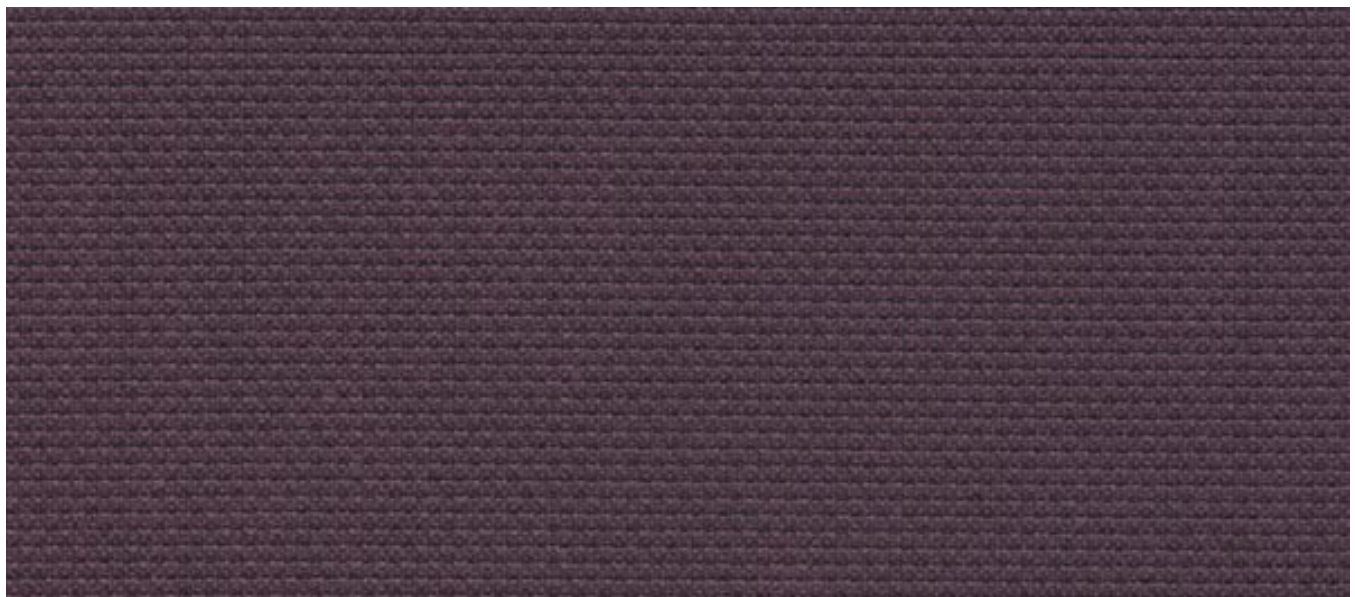
ACT Symbols:

Notes:

Additional backing may be added to meet flame code ASTM E84 for Panel and Wallcoverings applications. Contact Customer Service for pricing.

**Abrasion test results exceeding ACT Performance Guidelines are not an indicator of product lifespan. Multiple factors affect fabric durability and appearance retention.*

***ACT® Registered Certification Marks*



Ginseng



GN06 Gourd



GN08 Quartz



GN10 Sparrow



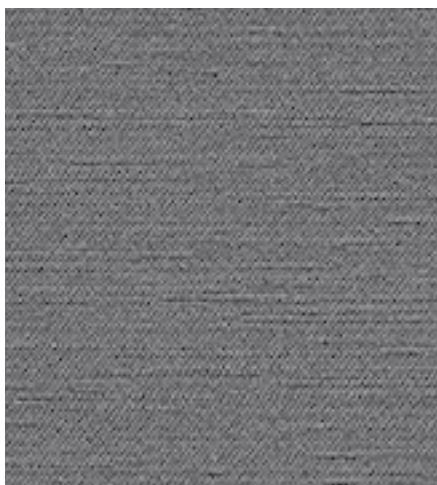
GN11 Ming



GN13 Rice



GN21 Dragon



GN22 Cave



GN23 Pacific



GN24 Lark

Ginseng

CONTENT:	100% PVC (Phthalate Free)
FINISH:	Resilience ^{SR} / Stain Protection / Anti-Microbial / Anti-Bacterial
BACKING:	100% Brushed Polyester Knit
WIDTH: 54"	REPEAT: None
PATTERN DIRECTION:	Shown up the roll
APPLICATION:	Heavy Duty Upholstery
DURABILITY:	250,000+ Double Rubs ASTM D 4157-10 Wyzenbeek
FLAMMABILITY CLASS:	1. California Technical Bulletin 117 : 2013. 2. UFAC Class 1 3. MVSS 302 4. NFPA 260 5. IMO 2010 FTP Code - Part 8 (3.1 & 3.2)
CLEANING CODE:	W / B (Bleach Cleanable 1:10) Rinse Well
ECO-FEATURES:	21P Phthalate Free (includes all Phthalates listed in CAL PROP 65 and CPSIA) Lead Free / BPA Free / Tris Free / Formaldehyde Free Does not contain Conflict Minerals



Harmony



Porcelain HA-01



Plaza HA-02



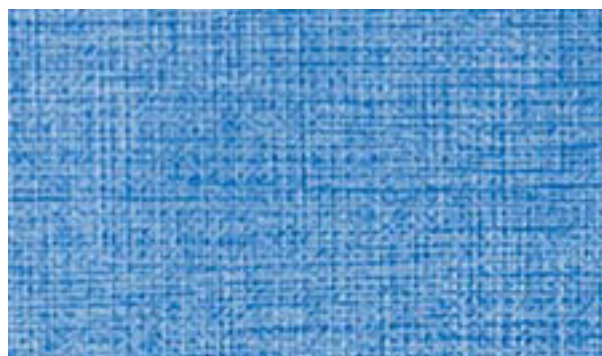
Calm Taupe HA-03



Deep Pool HA-09



Sea Glass HA-10



Brilliant Sky HA-12



Dark Navy HA-13

Harmony

CONTENT:	62% PU; 19% Rayon; 19% Polyester
SURFACE COMPOSITION:	100% Polycarbonate
BACKING COMPOSITION:	50% Rayon, 50% Polyester
FINISH:	Sta-Kleen®
WIDTH: 54"	REPEAT: N/A
PATTERN DIRECTION:	N/A
APPLICATION:	Heavy Duty Upholstery
HYDROLYSIS RESISTANCE:	15 Weeks
UV STABILITY:	Light Fastness 1000 Hours
CROCKING RESISTANCE:	Wet 5; Dry 5
BLUE DYE RESISTANCE:	Wet 4-5; Dry 4-5
DURABILITY:	500,000+ Double Rubs - Wyzenbeek
WEIGHT:	17.7 oz./yd +/-10%
FLAMMABILITY CLASS:	IMO A.652(16)8.2 / CA TB117-2013 / NFPA 260 U.F.A.C. Class 1 / FMVSS/CMVSS #302
CLEANING CODE:	W / S /BC 4:1 Water to Bleach Solution
ECO FEATURES:	<ol style="list-style-type: none"> 1. No PVC, plasticizers, phthalates, stabilizers, heavy metals, or Bisphenol A 2. No chemical flame retardants 3. No persistent organic pollutants 4. RoHS, REACH and Prop65 compliant 5. No toxic by-products 6. No anti-microbial additives



Writer's Block Salinger



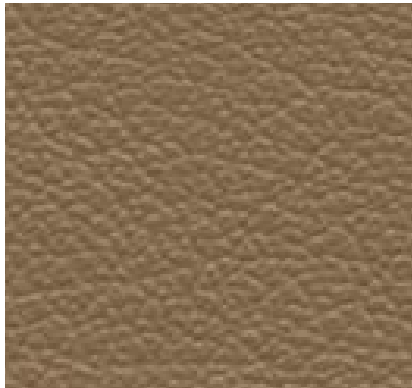
Winter White WBSA100



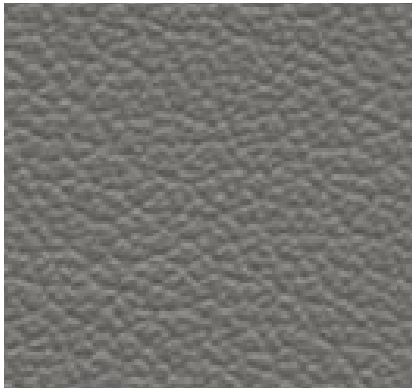
Canvas WBSA102



Bran WBSA104



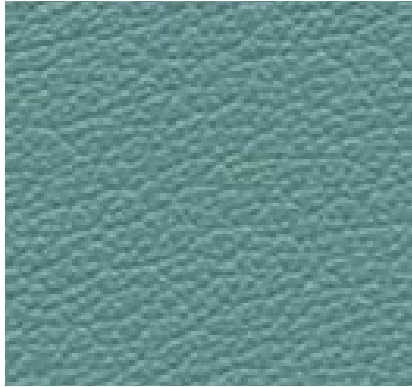
Mushroom WBSA108



Cinderblock WBSA116



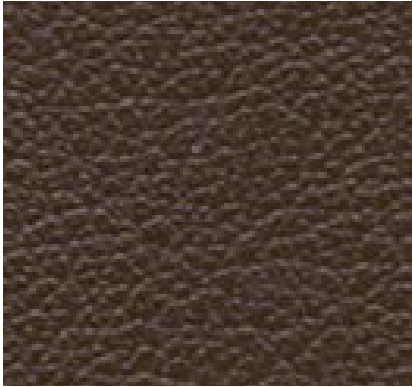
Shadow WBSA118



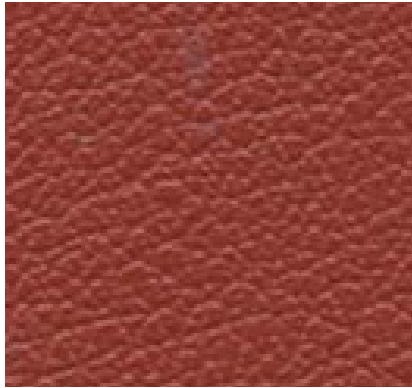
Carribean WBSA134



Grenadine WBSA160



Peat WBSA178



Goji WBSA184

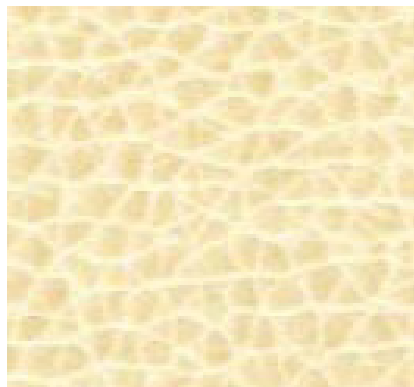
Writer's Block Salinger

CONTENT:	100% Polyurethane (Polycarbonate)
FINISH:	Writer's Block™
BACKING:	100% Polyester knit backing
WIDTH: 54"	REPEAT: None
PATTERN DIRECTION:	Shown up the roll
APPLICATION:	Heavy Duty Upholstery
DURABILITY:	250,000+ Double Rubs - Wyzenbeek
FLAMMABILITY CLASS:	1. California Technical Bulletin 117:2013; 2. UFAC Class 1; 3. NFPA 260; 4. BIFMA CS-191-53, Sec. 3; 5. FMVSS 302; 6. IMO 2010 FTP Code-MSV 88/26/Add.2 Part8(3.1); 7. ASTM E 84 Un-adhered: class 1 or A
CLEANING CODE:	W / BC 5:1. 70% Isopropyl alcohol for ink removal most surface disinfectants' (see mfrs. List)

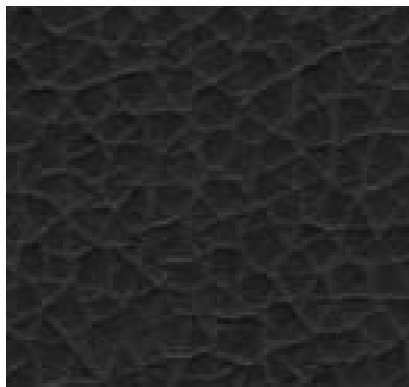


 **WARNING:** This product can expose you to chemicals, including Dimethylformamide, which is known to the State of California to cause cancer. For more information, go to <https://www.p65warnings.ca.gov>

Writer's Block Tolstoy



Alpaca WBTL001



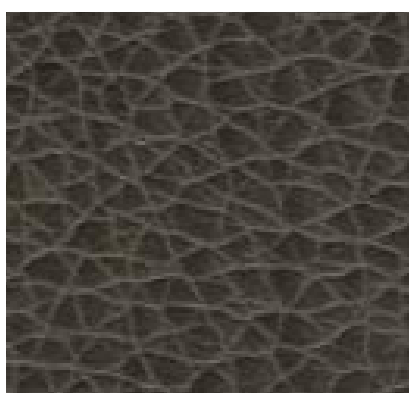
Asphalt WBTL002



Crimson WBTL004



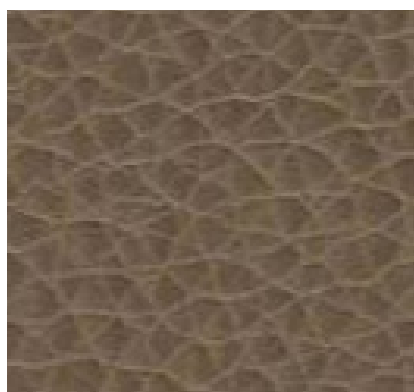
Feather WBTL006



Flintstone WBTL007



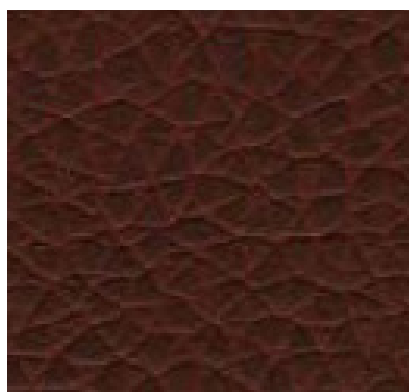
Harbor WBTL008



Quarry WBTL012



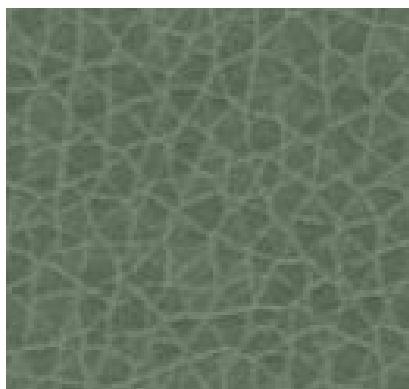
Rye WBTL014



Syrah WBTL015



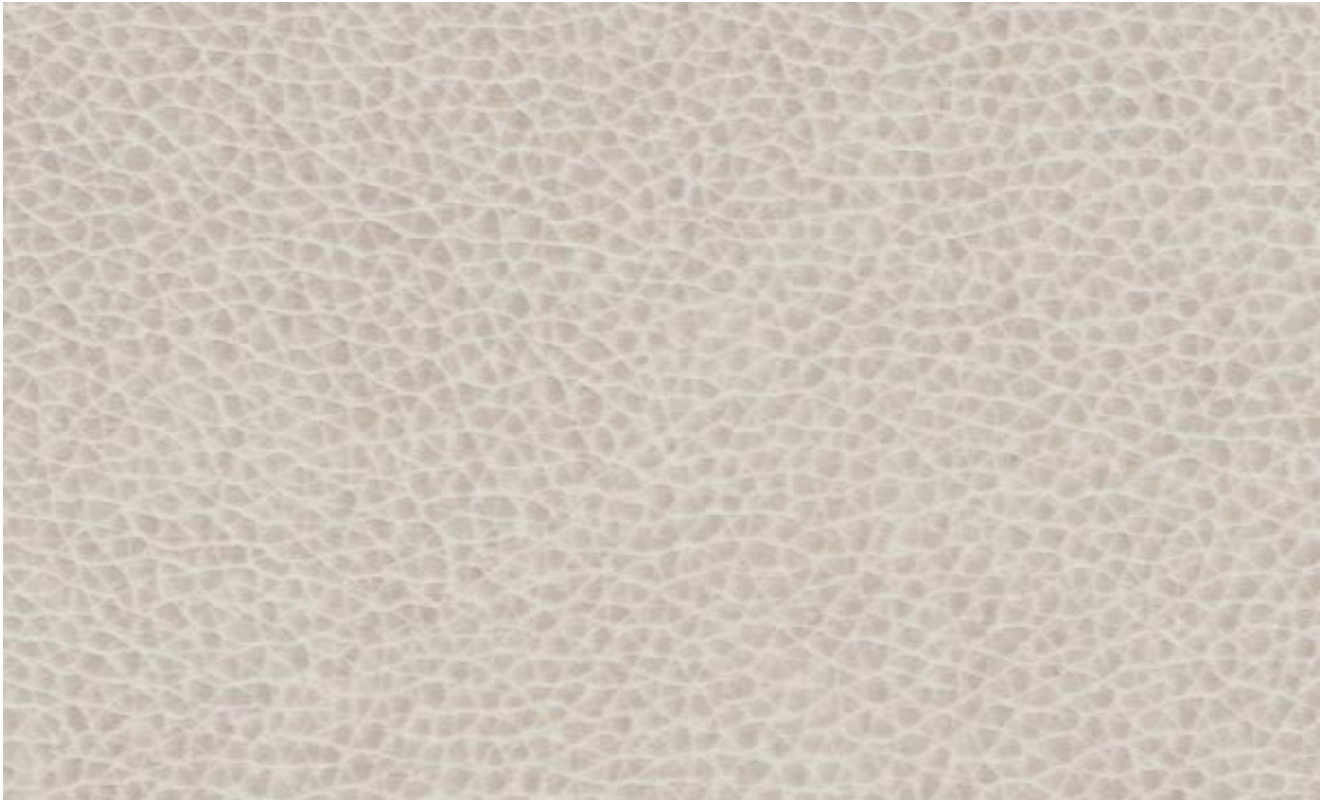
Timber WBTL016




Vista WBTL017

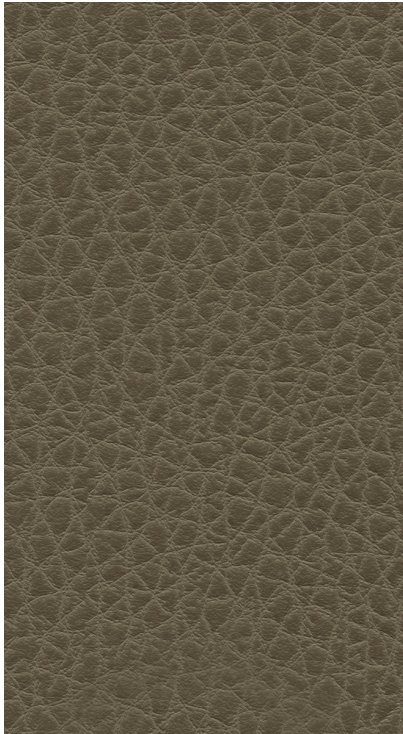
Writer's Block Tolstoy

CONTENT:	100% Polyurethane (Polycarbonate)
FINISH:	Writer's Block™
BACKING:	100% Polyester knit backing
WIDTH: 54"	REPEAT: None
PATTERN DIRECTION:	Shown up the roll
APPLICATION:	Heavy Duty Upholstery
DURABILITY:	250,000+ Double Rubs - Wyzenbeek
FLAMMABILITY CLASS:	1. California Technical Bulletin 117:2013; 2. UFAC Class 1; 3. NFPA 260; 4. BIFMA CS-191-53, Sec. 3; 5. FMVSS 302; 6. IMO 2010 FTP Code-MSV 88/26/Add.2 Part8(3.1); 7. ASTM E 84 Un-adhered: class 1 or A
CLEANING CODE:	W / BC 5:1. 70% Isopropyl alcohol for ink removal most surface disinfectants' (see mfrs. List)

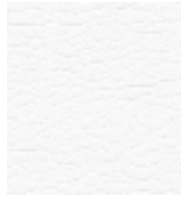


 **WARNING:** This product can expose you to chemicals, including Dimethylformamide, which is known to the State of California to cause cancer. For more information, go to <https://www.p65warnings.ca.gov>

Uf Select Harbor



HB03 Cobblestone



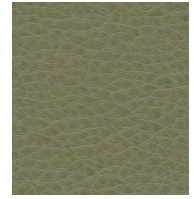
BS12 Vista



BS01 Ranch



BS03 Canton



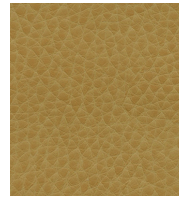
BS09 Agave



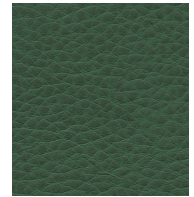
HB01 Snowball



HB02 Creamy Grey



BS04 Desert Park



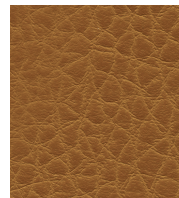
BS11 Torrey Pine



BS13 Silver Strand



BS02 Trail



HB06 Almond Shell

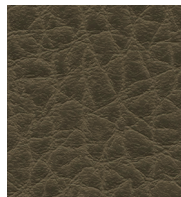


HB10 Tea Leaf

Uf Select Bayside



BS14 Blackbird



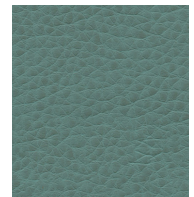
HB05 Charred



BS06 Cliff



BS16 Catalina



BS10 Sea Cave



BS07 Del Mar



BS05 Carmel



HB07 Butter Rum



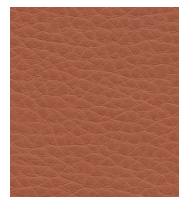
HB09 Blue Hill



BS15 Camino



HB04 Beachwood



BS17 Coronado



BS08 Naval



HB12 Whale Watch



HB08 Apple Cider



BS18 Cedar Creek

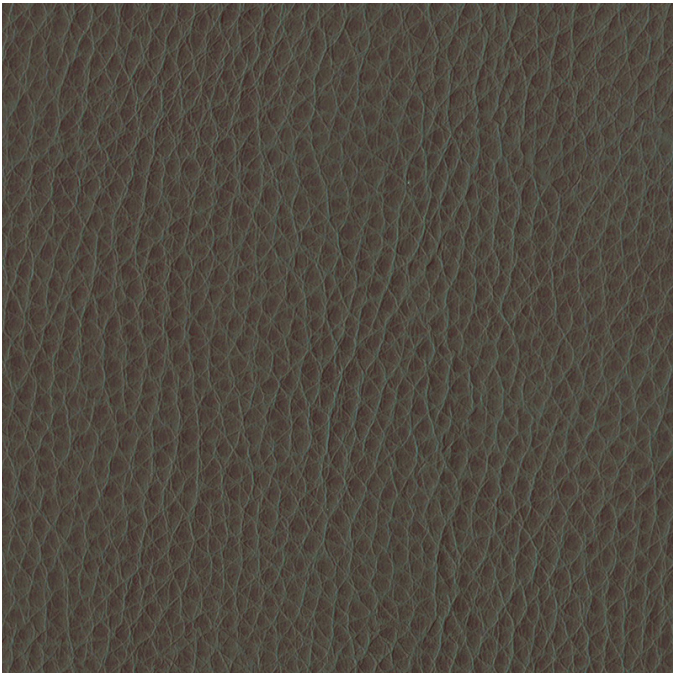


HB11 Bristol

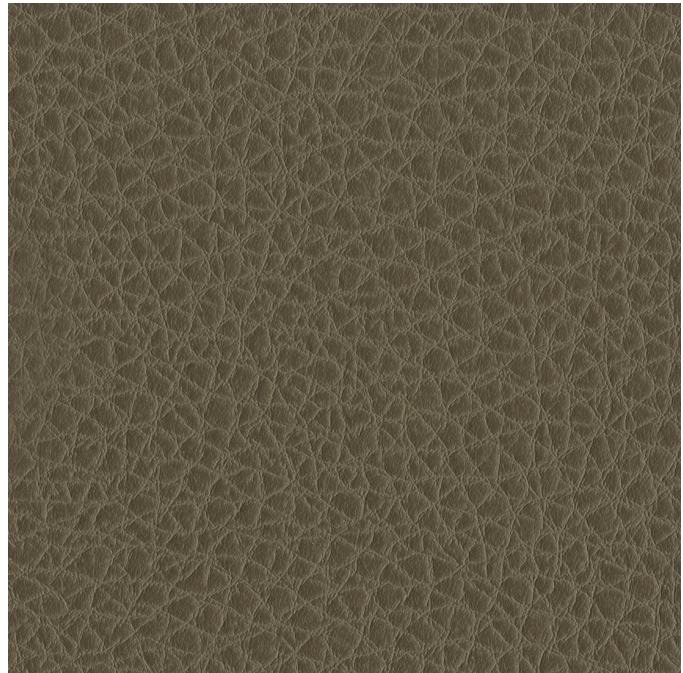
Collection	Composition	Weight / Thickness	Abrasion
Harbor	Polycarbonate Blended Surface 65% Polyester, 35% Cotton Backing	12.53 oz. per sq. yard Approx. 0.95 mm	ASTM D4157 / 200,000 DR Wyzenbeek
Bayside	Polycarbonate Blended Surface 65% Polyester, 35% Cotton Backing	12.53 oz. per sq. yard Approx. 0.95 mm	ASTM D4157 / 200,000 DR Wyzenbeek
Width:	54"		
Hydrolysis:	10 Weeks ASTM D3690 SECT. 6.11 (Hydrolytic Stability) / ISO 1419 Method C (Accelerated Ageing)		
F/R Rating:	ASTM E84 (adhered) - Class A CA TB 117 - Pass FMVSS 302 & 95/28 ANNEX IV - Pass NFPA 260 - Class 1 UFAC - Class	Can be treated to meet FAR specifications. These fabrics, when treated and/or used with other compatible furniture components, have been shown to perform under the fire test conditions BS 5852 Source 0, 1 & 5 (Cig, Match and Crib 5), BS 7175, BS EN 1021 Part 1 & 2 (Cig & Match). (Bayside Only)	
Adhesion of Coating:	ASTM D751		
Tear Strength:	ASTM D2261		
Breaking Strength:	ASTM D5034		
Tensile Strength:	BS EN ISO 1421		
Crocking:	AATCC 8, Grade 4-5 Wet & Dry		
Light Fastness:	AATCC 16.3, 200 Hours, Grade 4 ISO 105 B02, Grade 6		

For more information on certifications and standards, sustainability, as well as cleaning and care instructions, please visit our website - www.paulbraytondesigns.com

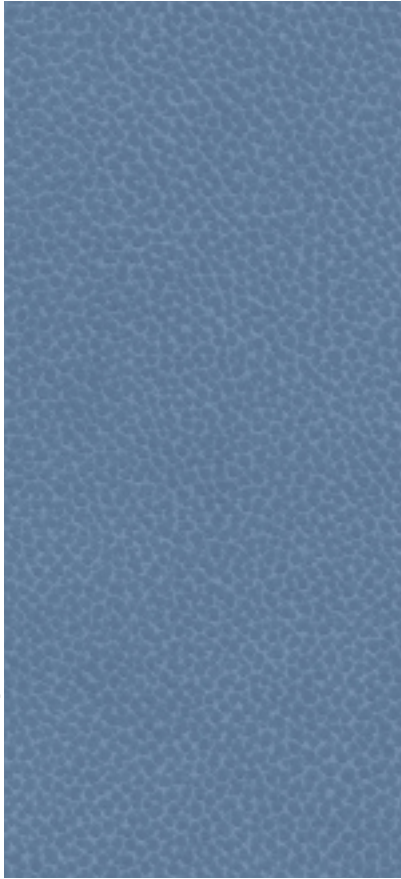
Uf Select Bayside



Uf Select Harbor



Ultraleather® | Gulf Pro



GP 001 Capri

Ultraleather® | Pacific Pro



PP 001 Royal



PP 002 Chalk



PP 003 Egg



GP 002 Canary



GP 003 Apple Green



PP 004 Fog



PP 005 Eggshell



PP 006 Apricot



GP 004 Meadow



PP 007 Dusk



PP 008 Sand



GP 005 Tangerine



PP 009 Evergreen



GP 006 Dove



GP 007 Alabaster



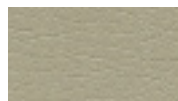
PP 010 Henna



PP 011 Aegean



PP 012 Glacier



PP 013 Almond



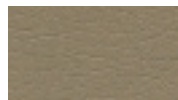
PP 014 Persimmon



PP 015 Basil



PP 016 Pewter



PP 017 Stone



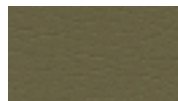
GP 008 PPPpy



PP 018 Sea Foam



GP 009 Metal



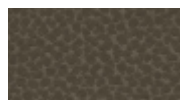
PP 019 Khaki



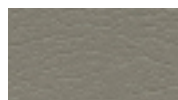
PP 020 Passionfruit



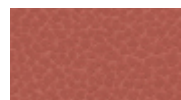
GP 010 Sea



GP 011 Seal



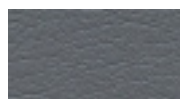
PP 021 Putty



GP 012 Cantaloupe



PP 022 Azure



PP 023 Smoke



GP 013 Chamois



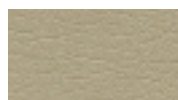
PP 024 Desert Rose



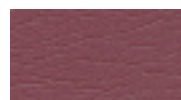
PP 025 Cornflower



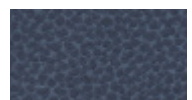
GP 014 Charcoal



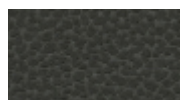
PP 026 Camel



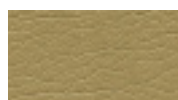
PP 027 Berry



GP 015 Indigo



GP 016 Coal



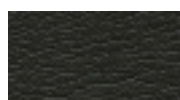
PP 028 Praline



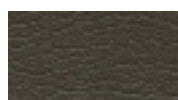
GP 017 Currant



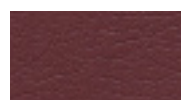
PP 029 Yale



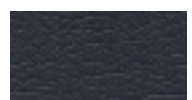
PP 030 Dark Knight



PP 031 Mocha



PP 032 Port



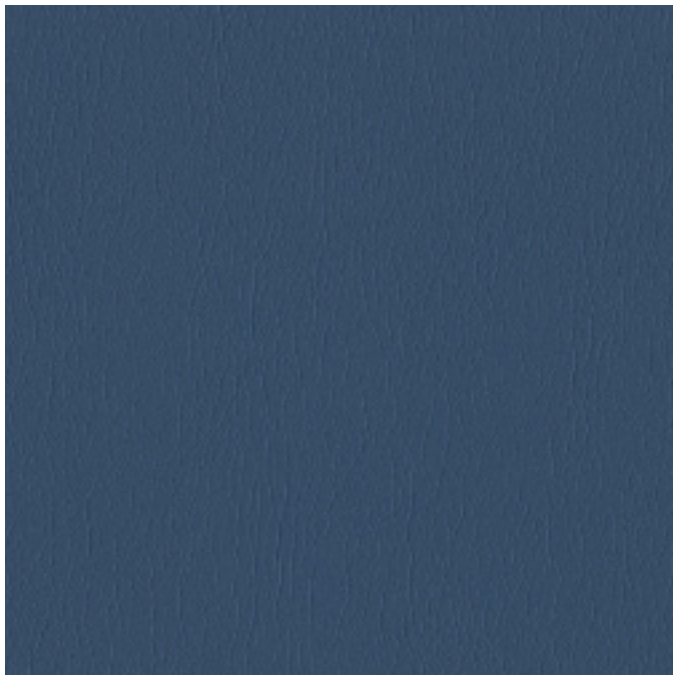
PP 033 Ink

Collection	Composition	Weight / Thickness	Abrasion	Antimicrobial
Ultraleather® Pacific Pro Ink & Denim [†] Resistant EPA-registered antimicrobial protection	100% Polycarbonate Polyurethane Surface 100% Rayon Backing	9.7 oz. per sq. yard 330 grams per sq. metre / Approx. 0.95 mm	ASTM D4157 / 500,000 DR** BS EN ISO 12947-2 / 200,000 R* **Wyzenbeek *Martindale	ASTM E2180
Ultraleather® Gulf Pro Ink & Denim [†] Resistant	100% Polycarbonate Polyurethane Surface 65% Polyester, 35% Rayon Backing	12.1 oz. per sq. yard 410 grams per sq. metre / Approx. 1.15 mm	ASTM D4157 / 400,000 DR** BS EN ISO 12947-2 / 200,000 R* **Wyzenbeek *Martindale	N/A
Width:	54"			
Hydrolysis:	14+ Weeks ASTM D3690 SECT. 6.11 (Hydrolytic Stability) / ISO 1419 Method C (Accelerated Ageing)			
F/R Rating:	ASTM E84 (adhered) - Class A CA TB 117 - Pass FMVSS 302 & 95/28 ANNEX IV - Pass NFPA 260 - Class 1 UFAC - Class	Can be treated to meet FAR specifications. These fabrics, when treated and/or used with other compatible furniture components, have been shown to perform under the fire test conditions of ASTM E84 (unadhered), BS 5852 Source 0, 1 & 5 (Cig, Match and Crib 5), BS 7175, BS 5867 Part 2 Type B, IMO Part 8 and NFPA 701.		
Adhesion of Coating:	ASTM D751			
Tear Strength:	ASTM D2261			
Breaking Strength:	ASTM D5034			
Tensile Strength:	BS EN ISO 1421			
Crocking:	AATCC 8, Grade 4-5 Wet & Dry			
Light Fastness:	AATCC 16.3, 200 Hours, Grade 4 ISO 105 B02, Grade 6			

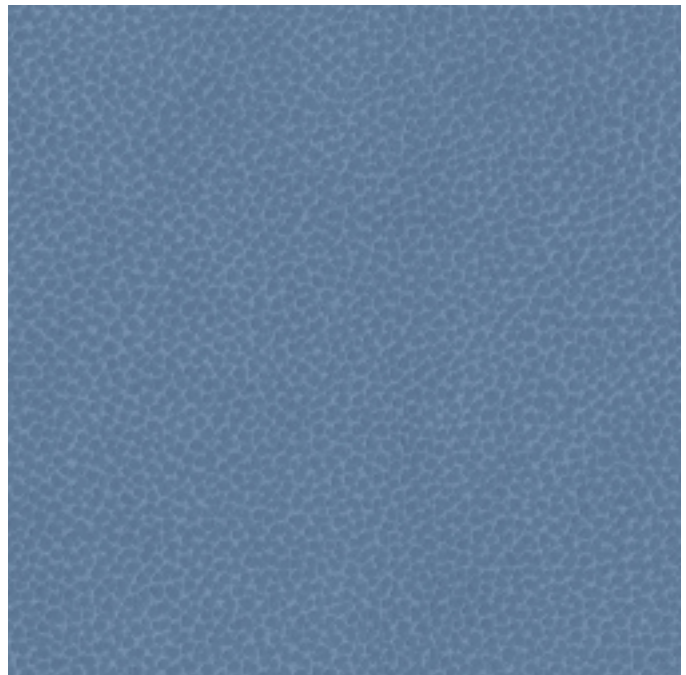
† Removal of most denim dye may vary depending on the quality of dye and the period of time the stain sets in. Dye transfer is difficult to control, not always preventable, and may be irreversible.

For more information on certifications and standards, sustainability, as well as cleaning and care instructions, please visit our website - www.paulbraytondesigns.com

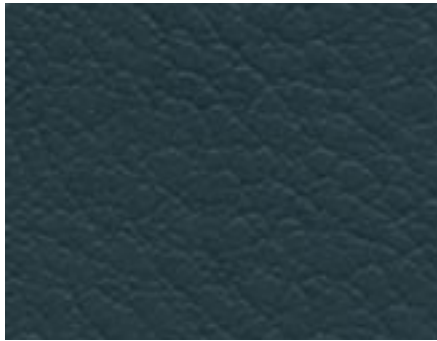
Ultraleather® | Pacific Pro



Ultraleather® | Gulf Pro



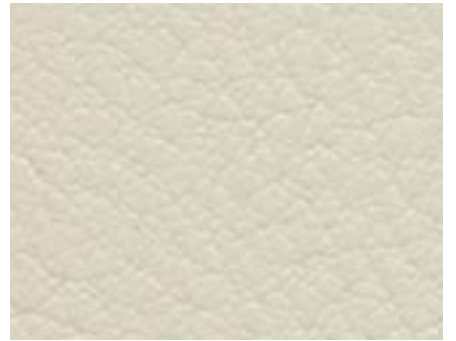
Viva



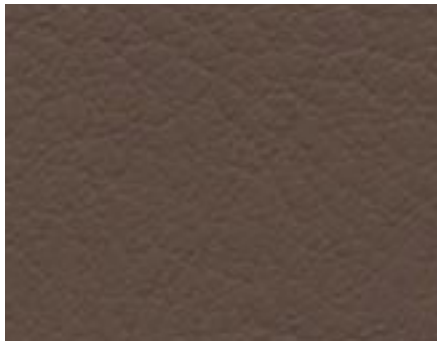
Deep Sea VIVA005



Cornucopia VIVA007



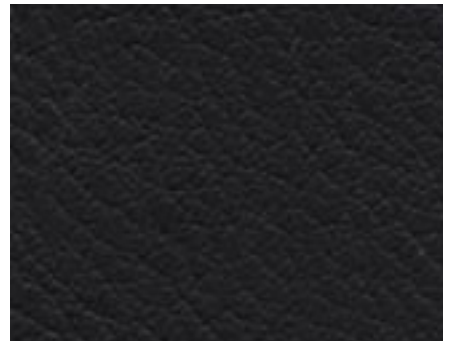
Limestone VIVA019



Cattail VIVA020



Newport VIVA023



Knight VIVA026



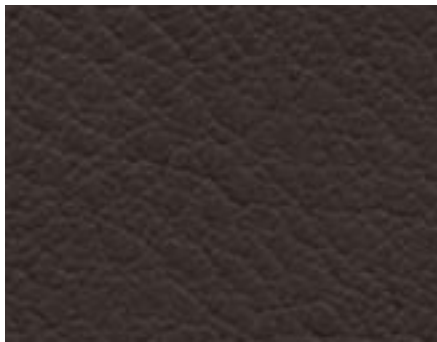
Cranberry VIVA027



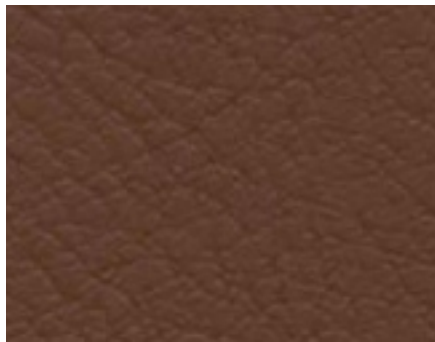
Quarry VIVA033



Storm VIVA034



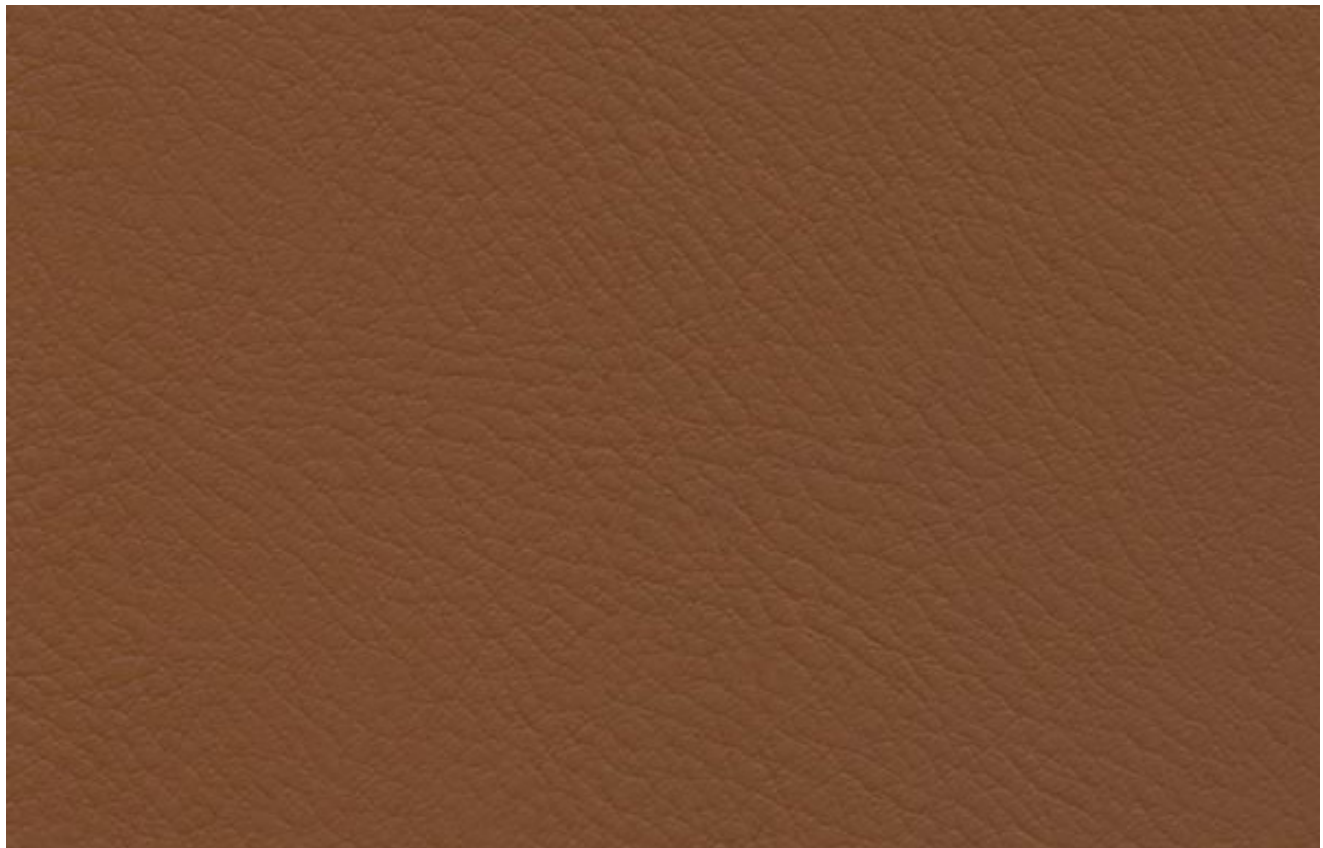
Sumatra VIVA036



Penny VIVA038

Viva

CONTENT:	100% Polyurethane
BACKING:	100% Polyester
WIDTH: 54"	REPEAT: N/A
APPLICATION:	Heavy Duty Upholstery
DURABILITY:	250,000+ Double Rubs - Wyzenbeek
FLAMMABILITY CLASS:	California Tech. Bulletin 117 Section E; 2. UFAC Class 1; 3.BIFMA; 4. NFPA260; 5. IMO A.652(16)8.2
CLEANING CODE:	W / B



Copenhagen Leather



COPEN01 Black



COPEN02 Slate



COPEN06 Dove



COPEN05 Cloud



COPEN06 Winter



COPEN07 Off White



COPEN10 Shiitake



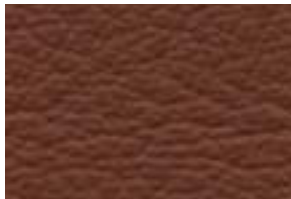
COPEN14 Wheat



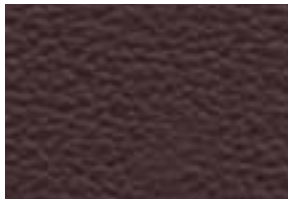
COPEN16 Butterscotch



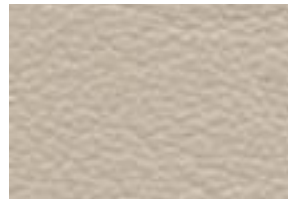
COPEN17 Spice



COPEN18 Cayenne



COPEN020 Port



COPEN21 Oyster



COPEN23 Cashmere



COPEN29 Sorrel Brown



COPEN30 Dark Chocolate



COPEN50 Blue Spruce



COPEN51 Ultramarine



COPEN52 Cobalt



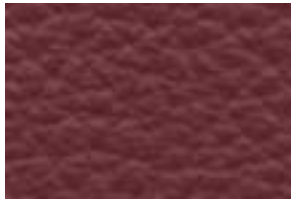
COPEN53 Horizon



COPEN60 Pine Needles



COPEN65 Pumpkin



COPEN71 Umbria Red



COPEN72 Red Pepper



COPEN74 Ladybug

Copenhagen Leather

CONTENT:	Full grain leather. Aniline dyed. Semi-aniline finish.
BACKING:	None
HIDES: Average 50 sq. ft.	REPEAT: N/A
APPLICATION:	Heavy Duty Upholstery
DURABILITY:	250,000+ Double Rubs - Wyzenbeek
FLAMMABILITY CLASS:	California Home Furnishings Bulletin 117, Section E. U.S. Department of Commerce CS-101-53, Class 1. UFAC, Class 1. NFPA 260, Class 1.

LEATHER CARE: Most leather types are provided with some kind of surface protection. While used, the leather comes in contact with body oil from e.g. hands and necks. If the leather is not cleaned and protected regularly, the body oil will slowly dissolve the surface protection. With no protection, the oil will penetrate into the leather, causing dark oil stains or discoloration. Take good care by regularly clean and protect the leather. The life span and elegant look of the leather is up to you to keep.



WWW.PAULBRAYTONDESIGNS.COM