

# CAMERON



SUPREEN™

# WALDEN



SUPREEN™



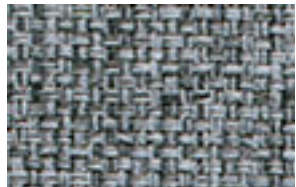
CM01 Harbor



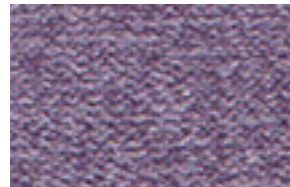
WL01 Beach



CM02 Jetty



CM03 Fog



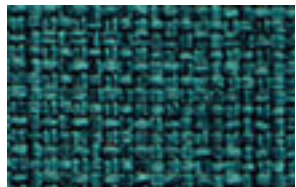
WL02 Dragonfly



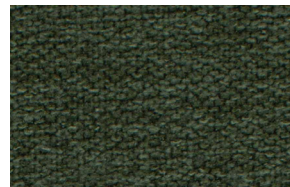
WL03 Sandy Swan



CM04 Blue Lake



CM05 Aquatic



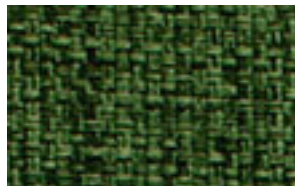
WL04 Lily Pad



WL05 Inlet



CM06 Starboard



CM07 Marina



WL06 Marsh



WL07 Gravel Path



CM08 Copper Keel



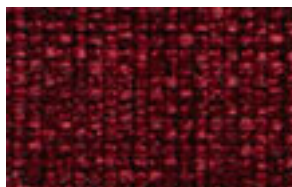
CM09 Wake



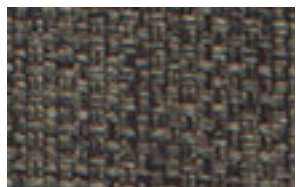
WL08 Misty



WL09 Silver Cove



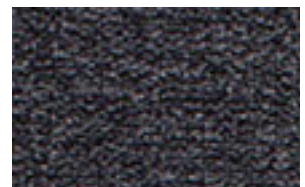
CM10 Port



CM11 Pontoon



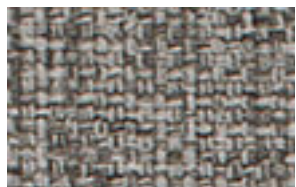
WL10 Drift



WL11 Anchor Slate



CM12 Deck



CM13 Mast



WL12 Breezy

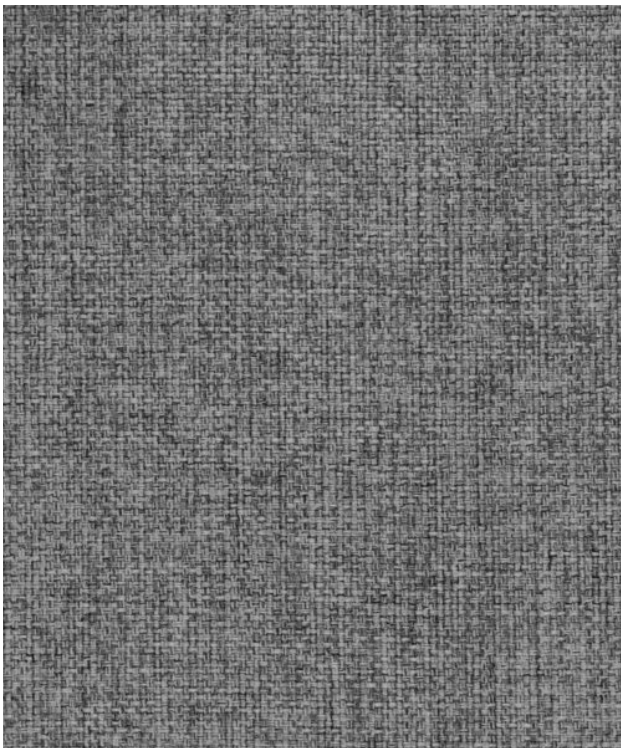


WL13 Coast

# CAMERON & WALDEN

|                            |  |
|----------------------------|--|
| <b>CONTENT (CAMERON):</b>  | 94% Polyester / 4% Polyurethane / 2% Silicone  |
| <b>CONTENT (WALDEN):</b>   | 89% Polyester / 9% Polyurethane / 2% Silicone  |
| <b>FINISH:</b>             | SUPREEN™ Stain Repellent   |
| <b>BACKING:</b>            | SUPREEN™ Liquid Barrier  |
| <b>WIDTH:</b> 54"          | <b>REPEAT:</b> None  |
| <b>PATTERN DIRECTION:</b>  | Shown up the roll  |
| <b>APPLICATION:</b>        | Heavy Duty Upholstery  |
| <b>DURABILITY:</b>         | 100,000 + Double Rubs ASTM D 4157-13 Wyzenbeek   |
| <b>FLAMMABILITY CLASS:</b> | <b>1.</b> California Technical Bulletin 117 : 2013 <b>2.</b> UFAC Class 1. <b>3.</b> NFPA  |
| <b>CLEANING CODE:</b>      | S/W, Spot clean with upholstery shampoo, foam from a mild detergent, or a mild dry cleaning solvent. Do not saturate with liquid. Pile fabrics may require brushing to rest should not be removed and dry cleaned.<br>Bleach Cleanable: 1:10 bleach to water solution  |
| <b>ECO-FEATURES:</b>       | This product does not pose any exposure risks associated with the chemicals in PROP 65.<br>No added flame-retardant chemicals - AB2998 Compliant.<br>No added Anti-bacterial / Anti-microbial chemicals.<br>Lead / Heavy Metal Free<br>BPA free / TRIS free / Formaldehyde Free<br>Does not contain conflict minerals. |

## CAMERON



## WALDEN

